



# Pyrenean Sheepdog



CHRISTMAS 2008



Welcome to the Christmas edition of the Newsletter of the Pyrenean Sheepdog Club of Great Britain, and at the same time on behalf of the committee can I wish you all a super Christmas and a healthy and prosperous New Year.

In this Newsletter we have a number of articles and I hope that I have managed to get the balance right. To a certain extent we are trying to be as reflective as we can. To this end there is an article about Progressive Retinal Atrophy since there had been a great deal of interest in this subject generated on the pages of the Google group. In the future the aim is to have other articles on topics of interest. Please let us know via the link on the web-site what topics you would be interested in. We are also always interested in receiving articles for publication. Can I also take the opportunity of thanking Christel for her article on the Transhumance and also Liz for her sterling work in translating it from the French.

Below is a picture of Sardoune d' Oustaou de Padel who won Best in Show at the National Elevage held in Argèles Gazost in September this year.



I have received many photographs to be used for a future calendar. Thanks to all those who have sent them in. We still have some time before a final selection is made, so you can still send in more .

I am holding over one or two articles for the next issue so don't be disappointed if you can't find yours this time.



# Contact the Committee

**Chairperson** Dr Chris Lewis

Tel:- Leicester 0116 2881174

E-mail:- [riacaud@mac.com](mailto:riacaud@mac.com)

**Vice-Chairperson** Klaus Senkpiehl

Tel:- Leicester 01530 242759

E-mail:- [klaus.senkpiehl@talktalk.net](mailto:klaus.senkpiehl@talktalk.net)

**Secretary** Liz Lewis

Tel:- Leicester 0116 2881174

E-mail:- [riacaud@mac.com](mailto:riacaud@mac.com)

**Treasurer** Carla Senkpiehl

Tel:- Leicester 01530 242759

E-mail:- [carla.senkpiehl@talktalk.net](mailto:carla.senkpiehl@talktalk.net)

**Newsletter Editor** Dr Chris Lewis

**Committee Members:-**

Pat Wescott

e-mail:- [p.d.wescott@btinternet.com](mailto:p.d.wescott@btinternet.com)

Tel :- 01484 865363

Toni Wescott-Smith

e-mail:- [rozimbapsds@hotmail.co.uk](mailto:rozimbapsds@hotmail.co.uk)

Tel :- 01484 532672

Pat Phillips

e-mail: [phillips@kelltara.orangehome.co.uk](mailto:phillips@kelltara.orangehome.co.uk)

Tel :- 01538 361110

Lisa Sollitt-Pass

e-mail:- [lisa.solittpass@gmail.com](mailto:lisa.solittpass@gmail.com)

Tel :- 01909515643

Steve Phillips

e-mail:- [phillips@keltara.orangehome.co.uk](mailto:phillips@keltara.orangehome.co.uk)

Tel :- 01538 361110

Diane Newton

e-mail:- [nidasha@btinternet.com](mailto:nidasha@btinternet.com)

Tel :- 01777 818954

Kim Randall

e-mail:- [kim.randall@tesco.net](mailto:kim.randall@tesco.net)

Tel :- 01733 252694

Sheila Janson

e-mail:- [nidasha@btinternet.com](mailto:nidasha@btinternet.com)

Tel :- 01777 818954

**VISIT THE CLUB WEB-SITE**

[www.pyreneansheepdog.co.uk](http://www.pyreneansheepdog.co.uk)

Web site editor :- Charlie Stratton

He is always happy to include photographs of our Pyrenean Sheepdogs on the website. Access is via the web site.

Copyright of information and articles included in this newsletter remains with the club and/or the author. Reproduction by any means is not allowed without written approval of the author.

## **BITS AND PIECES FROM THE SECRETARY**

### **AGM**

The Annual General Meeting will be held at 12.00 on Sunday 15th February at The Bradgate, Newtown Linford, Leics. Members attending the AGM are welcome to join the committee for lunch after the meeting. Please let Liz Lewis know if you will require lunch.

Nominations are invited for President. All nominations should be received by the secretary by 15th January 2009

Any items for inclusion on the Agenda of the AGM should be received by the Secretary by 15th January 2009.

Should you wish to walk your dog before or after the AGM, Bradgate Park is just up the road from The Bradgate and is a super place for dog walking. There are deer in the park so dogs must be under control but not on leads.



### **Dates for your Diary**

The Fun Day 2009 will be held on Sunday 28th June at Lewknor Village Hall. Full details will be in the Spring Newsletter.

Chertsey and District Canine Society is putting on classes for the Pyrenean Sheepdog at its Open Show on 30th May 2009 at Montem Leisure Centre in Slough. Three classes will be put on, Junior, Graduate and Open with awards for BOB, RBOB and Best Puppy. The entry last year was very disappointing but if the entry this year is good, they will consider increasing the entry for 2010. Secretary Lesley Tasker 020 8470 4773



## **Constitution and Rules**

The changes to the Constitution and Rules have been approved by the Kennel Club and the document has been amended accordingly.



### **PRA**

There has been some discussion on the subject of PRA and whether or not Pyrenean Sheepdogs should be tested for it. The committee has decided that testing for PRA will not be recommended by the club at the moment. The situation will be monitored and we will be grateful for feed back from members should any dog have a problem with PRA. An article on PRA is included in this issue.



### **Rescue/Welfare**

It was decided at the last committee meeting that any donations to the club will be set aside to be used for Rescue/Welfare purposes. One club member has kindly set up a Standing Order so that she can contribute on a regular basis. Should any one else wish to do the same please contact the Treasurer for the bank details of the Club.



### **Crufts 2009**

Crufts 2009 will be held from the 5th to the 8th March. As usual the club will be manning the breed stand in the Discover Dogs area. If you think you would be able to help on the stand please contact Liz Lewis. Parking and entry tickets are provided by the Kennel Club as are vouchers towards refreshments.



## Judging for Rare Breeds

The Kennel Club is thinking of changing its regulations regarding the selection of judges for rare breed classes. At present to judge a numerically small breed where three or more classes are scheduled, a judge must be on the breed club B judging list or above. It has been suggested that selection from rare breed club judging lists can be restrictive and it would help if lists of available judges were supplemented. It is suggested that all judges approved for the Group level should be exempted from the "more than three class rule" for rare breeds within the group for which they are approved. The Kennel Club feels that such a policy might be a helpful way forward for all Championship and Open Show societies when selecting judges for rare breeds. If you have an opinion on this matter send your correspondence to: Angela Mitchell, The Kennel Club, 1-5 Clarges Street, Piccadilly, London W1J 8AB

## Points System

Don't forget to send your points in at the end of the year. Showing points to be sent to Pat Phillips Cockett Farm, Ferryhill, Basford, Nr Leek, Staffs ST13 7ET and agility and obedience points to Liz Lewis 10 Asquith Boulevard, Knighton, Leicester LE2 6FA.

Trophies for those with the highest points in each discipline will be awarded at the AGM.

## What's in a name?

Sheila Janson wrote in the last edition of the IPSF Newsletter about the increasing trend to call the Pyrenean Sheepdog the Pyr Shep or Pyrie. These are Americanisms and like Sheila I don't like to hear the Pyrenean Sheepdog referred to by these names. If Pyrenean Sheepdog is too much of a mouthful it could be referred to as the PSD. Purists may want to stick to the French name Berger des Pyrenees, Berger being pronounced Bearjay with a soft j. I'm sorry if this sounds a bit reactionary but it is important to keep things as they should be.



## HIP SCORES

MERRYWOOD GOFA GOLD  
AE2 RH 7/LH Total:14

MERRYWOOD RISING STAR AVEC CHKARAMOR  
AG4 RH3/LH5 Total: 8

CARABRAE OVER THE RAINBOW OF IVYDALE  
RH5/LH3 Total: 8



## WELCOME TO NEW MEMBERS

Lieven van Leuven

Ann de Clercq

Laura Cunningham

Amanda Marsden

Jenny Parfitt

Alex Parfitt (Junior Member)

Donna Terry

Ceri Jones (Junior Member)

Gareth Jones (Junior Member)

## CORRECTION

In the judge's report from Crufts it was stated that in the Open Dog class that 4th was Carabrae Mad as a Hatter, this should have been Lux Ch. Eracles de la Tuile au Loup.



# Nationale d'Elevage 2008

The Nationale d'Elevage was held on 20th and 21st September in the beautiful Parc de Casino in the lovely Pyrenean town of Argèles-Gazost. Saturday morning was devoted to the various tests. These are; the Test de Comportement which tests a dogs reactions to a variety of situations, CSAU is more of an obedience test and a good score in this results in the dog being awarded a card which enables it to work in France, the CANT tests a young dogs aptitude to herd sheep. An agility course had been set up and anyone and their dog who had experience in agility could take part. This proved to be a popular activity.

Following the AGM a parade assembles in the Parc and then, led by Alain Pécoult, everyone walks up into the town where, in one of the squares, where all participants in the show are welcomed by the Mayor and the Tourist Board. After the speeches we were treated to a demonstration of local dancing. Following this, wine and nibbles were served.

Proceedings start early on Sunday morning. The Parc is alive with dogs and their owners and also a variety of stalls selling local produce and artifacts. All four Pyrenean breeds were represented in the show ring 363 dogs in total. 18 Catalan Sheepdogs, 10 Pyrenean Mastiffs, 17 Face Rase 138 Pyrenean Mountain Dogs and 180 Pyrenean Sheepdogs (Long Haired). Judging went on for most of the day in rings set out round the Parc. Mid afternoon attention turned to the main ring where Best of Breed Judging took place, also the judging of the couples, pairs and groups. A popular event in the main ring is the parade of exhibitors from countries other than France. Owners and dogs of each country parade round the ring with flags and in the case of the Belgians, wearing fluorescent yellow T-shirts! The following countries were represented Norway, Spain, Switzerland, Italy, Belgium, Holland, Germany, Great Britain, Luxembourg, Finland, Sweden and USA thus making it a truly international affair.

The last event in the main ring is to choose Best in Show and this year the honour went to a Pyrenean Sheepdog, Sardoune de l'Oustaou de Padel owned by André and Agnès Audibert. Con-

gratulations to them.

Once again the weather was absolutely perfect on both days which just made the week end. It was good to see several club members who had made the journey down to Argelès-Gazost to visit the show. I can't emphasise enough what a wonderful experience the show is and certainly worth a visit for all Pyrenean Sheepdog enthusiasts. If you haven't already been to the show why not think about next year? We'll be there again on the 19th and 20th September.

Liz Lewis

A full list of the results of all those club members can be found below.

## Pyrenean Mastiff

Open Female

Zalute Zuccessfullness Owned by Sue Lewis 2nd Exc Reserve CAC

## Pyrenean Sheepdog (Face Rase)

Champion Female

Ch Saphir Bleu de Loubajac Owned by Ann de Clercq 1st Exc Best Face Rase

## Pyrenean Sheepdog (Long Haired)

Very Young Male

Cabaleros du Meya Owned by Françoise Préat 1st Exc

Intermediate Male

Foli du Pic de Pioulou Owned by Veerle Vlerick Very good

Open Male

Falco of Nobels Kingdom Owned by Ann de Clercq Very good

Riacaud Ulric de Picors Owned by Vicky Wilford Exc

Champion Male

Ch Eracles de la Tuile au Loup Owned by Laurence Bostyn 2nd Exc+

Ch Tintin de l'Oustaou de Padel Owned by Veerle Vlerick 3rd Exc

Baby Female

Heleonora du Pic du Pioulou Owned by Veerle Vlerick (soon to be owned by Sandy Readman)

Promising

Very Young Female

Grimaldi of Nobels Kingdom Owned by Ann de C;ercq 3rd Exc

Open Female

Rambauds Madame Mystique avec Riacaud Owned by Liz Lewis Exc

Toyah de l;Oustaou de Padel Owned by Roland Merckx Exc

Ribalette de l'Oustaou de Padel Owned by Liz Lewis Very good

Veteran Female

Orla de l'Oustaou de Padel Owned by Roland Merckx 4th

### **Pyrenean Mountain Dog**

Open Male

Sketrick Gardian Owned by Lesley Waters 1st Exc CACS

Congratulations to Lesley this is a fantastic achievement.

### **A Personal Observation**

It has always been the aim of the PSD Club of GB to keep the Pyrenean Sheepdog as close to its French example as possible and Alain Pécourt reminded us at the seminar that it is essentially a rustic dog. It was therefore interesting to see at the Nationale d'Élevage that grooming of the

dogs was kept to an absolute minimum. (To my knowledge some of the dogs were out in the mountains the day before.) There were no grooming tables and no one was grooming the dogs during the show. I think that this is something that needs to be considered when showing the dogs in this country. Judges will only expect to see over groomed dogs if that is what they see. As more dogs come to Crufts from overseas more will be presented with cadenets. Cadenets are perfectly acceptable in the ring overseas and will have to be accepted here. It is not a sign of neglect when a dog has cadenets as they have to be maintained. I feel that it is important to get things right while the Pyrenean Sheepdog is still relatively new to the show ring in this country.

Liz Lewis

### **NEWS FROM THE KENNEL CLUB -- KC DOG**

KC Dog was launched by the Kennel Club in April 2006 as a way of informing and dog owners updated about a number of issues. As a result of the Clean Neighbourhoods and Environment Act 2006, local authorities have the power to implement dog control orders in your local area and also to issue penalties. The Kennel Club is concerned that these provisions are very wide-ranging. In additions it was felt that local residents should be able to voice their concerns and comment on dog control orders before they are introduced. Although local authorities are obliged to consult on the orders, they are only required to do so via their local newspapers, meaning many people would not be made aware of developments.

Membership of KC Dog is absolutely free. Once joined the Kennel Club will keep individuals informed about dog control orders and will act as an intermediary between local authorities and their residents. In addition to this KC Dog will also keep members updated about national campaigns such as those relating to electric shock collars and dangerous dogs.

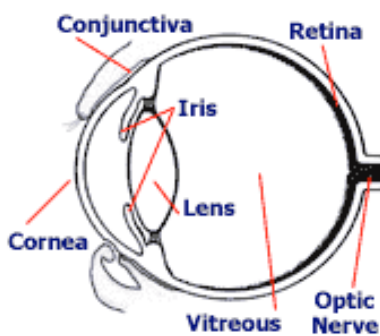
If you wish to become a member of KC Dog please email your name, address and email address to [kcdog@the.kennelclub.org.uk](mailto:kcdog@the.kennelclub.org.uk) or call 020 7518 1020 or visit [www.kcdog.org.uk](http://www.kcdog.org.uk) for more information.

## Progressive Retinal Atrophy (PRA) in Dogs

This is a genetic, inherited disease of the retina (the "film" in the camera), which occurs in both eyes simultaneously. The disease is nonpainful, and there is no cure for it. The eyes are genetically programmed to go blind. PRA occurs in most breeds of dogs and can occur in mixed breeds also. It is inherited as an autosomal recessive in most breeds studied, with the following exceptions: PRA is dominantly inherited in Old English Mastiffs and Bullmastiffs, and PRA is sex-linked and found primarily in male dogs in the Siberian Husky and Samoyed breeds. The first description of this problem was in Gordon Setters in 1911 but it has now been recorded in over one hundred breeds.

### The Anatomy of the eye

The eye is a very delicate, yet surprisingly durable organ. It consists of several layers. The cornea



is a transparent layer that covers the front of the eye. The iris is the coloured part of the eye and it is responsible for letting in more or less light. The lens gathers and 'bends' light in order to focus it

on the retina. In between the cornea and lens is an area of fluid which bathes the lens and helps it focus. The retina lines the inside of the eye and is linked to the optic nerve which in turn is linked to the brain. A large area between the lens and the retina contains a jelly-like fluid called 'vitreous.' The vitreous gives the eye its form and shape, provides nutrients, and removes waste products.

### The retina

The retina is the structure affected in PRA. This important part of the eye receives the light gathered and focused by the other eye structures. It takes the light and essentially converts it into electrical nerve signals that the brain, via the optic nerve, interprets as vision. The retina contains photoreceptors, called rods and cones,

which help the animal see in darkness (rods) and see in bright light and colour (cones). PRA usually affects the rods in the retina first. The cones tend to be affected at a later stage of the disease. There is an equivalent condition in humans and it is known as Retinitis Pigmentosa.

### Common features

Early in the disease dogs are affected by night blindness due to the involvement of the rods in the retina. The affected dog lacks the ability to adjust its vision to dim light: later their daytime vision also fails resulting in progressive blindness. However even though the dogs vision is deteriorating they do tend to adapt to their handicap as long as the environment around them remains constant and they are not exposed to challenging situations. As the condition progresses the pupils of their eyes become increasingly dilated due to the eyes trying to compensate by attempting to gather more light. Owners often notice a "glow" and increased "eye shine" from the eyes. There are also reports that the lens of the eye may become cloudy or opaque due to the development of cataracts. All dogs with PRA will eventually develop blindness from advanced PRA, and the time frame until the dog is blind varies considerably from dog to dog, but usually takes at least 6 months from the time of diagnosis, and can rarely take years until the dog is completely blind. There is also a variation depending upon breed. Some breeds have an early onset form in that pups are affected very early in life. Breeds affected in this way include the Collie, the Irish Setter, the Norwegian Elkhound and the Miniature Schnauzer. In other breeds PRA is much later in onset, generally the dogs appear normal when young but develop PRA as adults.

### Diagnosis of PRA

Following the development of symptoms examination by the vet is necessary. The diagnosis is made by ophthalmic examination. This is undertaken using an instrument known as an ophthalmoscope and it requires the dilatation of dogs pupils using eyedrops of an atropine like medication. Generally speaking all forms of the condition have roughly the same appearance on examination. These include increased shininess of the fundus of the eye, (the part of the back of

the eye where the optic nerve is) a reduction in the diameter and branching of the blood vessels on the retina as well as the shrinking of the optic nerve head. These changes occur in all forms of the condition but at different rates in different breed-specific forms.

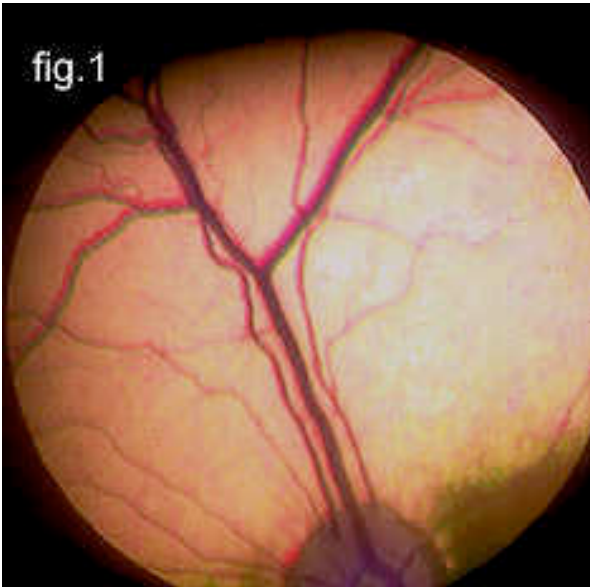


Fig.1 Photograph of a normal retina

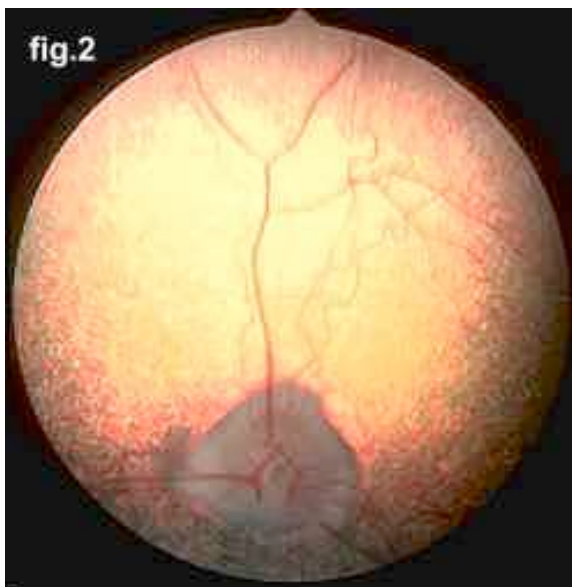


Fig2. Photograph of diseased retina with reduction in size and branching of blood vessels.

Further confirmation of the condition can be made using a technique known as electroretinopathy or ERG. This is a highly specialised process involving measuring the response to a flash of light. The dog needs to be anesthetized to provide accurate results. The response in dogs with

PRA is diminished. It is especially useful for making an early diagnosis in dogs at high risk.

Genetic testing is possible in some breeds due to the fact that the affected gene has been isolated in certain expressions of the condition. The DNA testing is a relatively straight forward process. There are lists available of breeds where this is applicable.

### Autosomal Recessive Inheritance

In this type of inheritance it is the non-dominant gene which is affected. Genes come in pairs. Recessive inheritance means BOTH genes in a pair must be defective to cause disease. Those with only one defective gene in the pair are considered carriers. However, they can pass the abnormal gene to their offspring.

If a puppy is born to parents who both carry an autosomal recessive change (mutation), there is a 1 in 4 chance of getting the malfunctioning genes from both parents and developing the disease. There is have a 50% (1 in 2) chance of inheriting one abnormal gene and therefore becoming a carrier.

	Nn	Nn	
NN	Nn	Nn	nn

If a non affected individual is mated with a carrier, there is a 50% chance of any offspring becoming carriers.

	Nn	NN	
NN	NN	Nn	Nn

The situation is even worse if one or more of the parents is affected. It is therefore imperative that if the condition is diagnosed that that dog is not used for breeding. At the same time the breeder should also be contacted since it would be important not continue to breed with that line.

There is no treatment or way to stop the progress of the condition. However surprisingly dogs are able to adapt especially in their familiar environment. Good common sense ways are helpful in limiting the affects of the condition.

# JUST A DOG



From time to time people tell me, "Lighten up, it's just a dog," or, "That's a lot of money for just a dog." They don't understand the distance travelled, time spent, or costs involved for "Just a dog." Some of my proudest moments have come about with "Just a dog." Many hours have passed with my only company being "Just a dog," and not once have I felt slighted. Some of my saddest moments were brought about by "Just a dog." In those days of darkness, the gentle touch of "Just a dog" provided comfort and purpose to overcome the day.

If you, too, think it's "Just a dog," you will probably understand phrases like "Just a friend," "Just a sunrise," or "Just a promise." "Just a dog" brings into my life the very essence of friendship, trust, and pure unbridled joy. "Just a dog" brings out the compassion and patience that makes me a better person. Because of "Just a dog" I will rise early, take long walks and look longingly to the future.

For me and folks like me, it's not "Just a dog." It's an embodiment of all the hopes and dreams of the future, the fond memories of the past, and the pure joy of the moment. "Just a dog" brings out what's good in me and diverts my thoughts away from myself and the worries of the day.

I hope that someday people can understand it's not "Just a dog." It's the thing that gives me humanity and keeps me from being "Just a man or woman."

So the next time you hear the phrase "Just a dog," smile, because they "Just Don't Understand."

Author Unknown

## Transhumance 2008 – Ardèche

After years of insistence from André and Agnès Audibert, we have, since 2004, arranged our holidays to coincide with the 'transhumance'.

The middle of June 2008, the time has come to set out.

A few days before the event we visited André and Agnès to sort everything out. The final arrangements were made. What must be taken, who will transport what and when. As well as the people, the equipment must arrive at the meeting points and good organisation is necessary.

Departure with André



Roland Baptiste and Toyah

The transhumance is to move the sheep from the valley to the summer meadows and to gather different groups of sheep together. This annual phenomenon is almost folklore, but it is a real experience (especially for a city dweller like me). Therefore if ever you have the chance to take part in the transhumance don't hesitate. Our transhumance gathered together twenty flocks of sheep belonging to local shepherds and moved all the sheep to the hills of the Tanargue for the summer.

Up until now nothing has been said about the importance of the transhumance. This is simple-to make sure that the sheep have the best to eat during the summer months, so that they go into the winter with a good layer of fat. This year there was no lack of good grass. Because of the wet spring, the meadows on the Tanargue were green, green and more green!



The sheep going up

There was something new this year-for the first time a group of walkers were given the chance to follow the shepherds and their flocks on the way to Tanargue. (An initiative of the association « Parc Naturel Régional de Monts d'Ardèche (PNR Ardèche) and of the Conseil Général).



The sheep grazing

The journey takes two whole days. A few days before, all the sheep are marked so that at the end of the summer the owners can recognise their sheep and sort them easily. Toyah, our Pyrenean Sheepdog, has real sheepdog blood in her veins. Her brother Tricouler is André's dog and he works the sheep. Toyah certainly didn't want to do less than her brother and after several years she knows how to keep the sheep together.



André with the sheep

Roland André and Toyah



The departure was arranged for 7am. To get there in time we had to get up at 5.30. Believe me, after two weeks of holiday, this was a cruel time to get up !

With a rucksack, a shepherd's staff and some warm clothes, we were ready to go. The journey started from Beaumont towards Loubaresse. Several flocks of sheep joined us along the way. They mixed together with a concert of frenetic bleating, as if they had missed each other and must gossip and tell what had happened during the year.

It is impossible to describe the journey in itself. The sensations, the views that one discovers, it is impossible to describe them. Even photos and/or video clips can not replay what slowly unfolds with the steps of the sheep in a magnificent countryside.

There is only one solution-to do it yourself, to live it and walk it with the sheep. To climb the hills with the sound of hooves crunching in the gravel and the bells worn by certain sheep.

From time to time a rest was necessary and at midday everyone helped themselves to an aperitif provided by the « Syndicat Parc Naturel des Monts de l'Ardèche »



Roland, André, Tricouler and Toyah

We stopped for the evening in a calm, sheltered spot not far from the Col de Meyrand. The support team was already there and had brought food and drink.



The Picnic

The camp fire was lit and, a little later, the smell of cooking sausages spread through the forest. In view of the coolness, everyone wanted to warm themselves round the fire. Everyone was hungry after the long walk. As usual Agnès, Sandrine and Christel had brought delicious salads, homemade terrine and desserts. Everyone could find something they liked. It was a very pleasant meal/ American Picnic.

The Camp fire

The time passed quickly round the fire and before we knew it it was time to go back to the house or to slip into your sleeping bag. None of those taking part in the transhumance had to count sheep before going to sleep !

The sheep passed a quiet night in their enclosure and were ready to go in the morning.





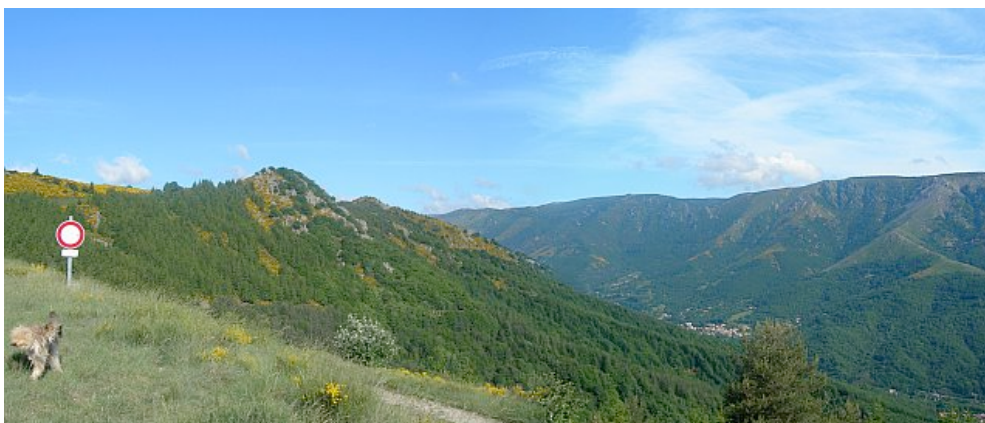
The sheep by the side of the water

We had to wait for the other flocks who were going to join our group. In the meantime a buffet, given by the Syndicat du Parc Naturel Régional Monts d 'Ardèche, was set up.

Later on in the afternoon we began the reverse journey to join our cars.

Satisfied, tired but very happy and after an exceptional experience, I went to bed very early. Once again I didn't need to count sheep before finding myself in dreamland.

Roland and Toyah sleeping



Panorama

A big thank you to André and Agnès, Pascal and Sandrine, the Syndicat de Transhumants, le Parc Naturel Régional des Monts de l'Ardèche, le Conseil Général, all the shepherds, the winemakers, the walkers who helped move the sheep along , the companions of the transhumance, the friends of the Pyrenean Sheepdog, the Cévenole Ardèchoise buffet and Christel.

Written by Christel van den Bosch and translated into English by Liz Lewis

## LATEST NEWS FROM ZILLAH



Hello everyone it's me here again with my latest news, Well, first of all, I would like to tell you that my arthritis has not got any worse since my last newsletter, I am continuing to take the tablets that Lisa the Vet prescribed for me, and they seem to work very well. But I must say that I have continued to carry on with the panting especially at night times, and because I sleep in the bedroom with Carla and Klaus, and as this has now been going on since the beginning of June, we are all quite tired.

Actually is it not as bad as it used to be, and we do have some nights now without much panting, but I have not stopped completely. I heard Lisa telling Carla and Klaus on our last visit to see her, that this panting occurs in some dogs when they reach old age, and sometimes can be worse in the evenings and throughout the night. I have been given some tablets to help me with this problem but I don't like taking them, they are very big and awkward to swallow. Klaus has tried all sorts of things to help me to take them, like burying them in pieces of sausage, or corned beef. Also he tried emptying the powder from the capsule and burying that in the sausage, but the powder smells quite strong. I do manage to take them one way or the other, and I must say that I do get some extra bits of sausage or corned beef as a reward.

In August we went on holiday to Scotland, I have been to the east side of Scotland before but this year we went stay in a small village called Killin which is in the west. We went again as usual with our friends Freda and John, and their two daughters, Catherine and Rebecca and their partners Dave and Joe. To split the journey over two days we stopped overnight in Appleby in Westmorland. We had a nice walk around the village and then went to the pub for a meal. I was told to sit under the table when we first went in, but I soon managed to position myself at the side without too much effort. By doing this it meant that I was able to make sure that everyone could make a fuss of me, which they did.

The next morning, and after a good nights panting, we set off in the sunshine for Scotland. I soon found myself dozing and I must have dropped off because when I woke up I heard Carla saying that we were nearly there. We decided to park in the village of Killin in order to have a look around, before going to the cottage where we would stay for the week. The village looked lovely and we sat outside the pub by the river to have a drink, and Carla had my water bowl with her so I could join in as well.

Our cottages stood in the grounds of a large, grand, old farmhouse. There were about six cottages altogether, so there were other families and their dogs staying there as well. We unpacked the car and after my travelling bag was unpacked I was given my dinner and tablets. That night we went back to the pub for an evening meal and a discussion on what we would all do the next day. They had all agreed that because I can't walk too far these days that Carla or Klaus would stay behind at the cottage with me, when the others wanted to go off on a long walk.

Behind our cottages was a disused railway track, and this was now used by walkers, and cyclists. The track went on for miles and in both directions, you could see wonderful views over forest and loch. I was taken along the track the next day for a short walk, but unfortunately, as it does in Scotland it had started to rain, but it didn't matter because Carla had remembered to pack my waterproof coat; this is a must for any older dog travelling to Scotland. As the weather

seemed to persist it was decided that a trip to a whisky distillery would be interesting. It was a lovely drive through the countryside, passing locks forest and mountains. Whilst the others went to look round I stayed in the car with Carla and Freda, as they didn't want to leave me alone, but then the sun appeared and so we went for a walk along the loch.

It was very warm and pleasant; all we need now is an ice-cream I thought to myself. We carried on with our holiday, fitting the activities around the weather. Some days were fine and others were wet on and off, but we all were able to enjoy our holiday. I had some lovely short walks, and pub visits, which I love as most people stop to have a word with me.

Perhaps the most important part of the holiday this year was that Catherine and her partner Dave got engaged whilst on holiday. Catherine had not known that this was going to happen. They had bought an engagement ring together whilst on another holiday in Bruges, but Dave had not wanted to give the ring to Catherine straight away, he told her they must wait for a special time. On the Thursday he asked her if she would like to go canoeing on the loch as it was a nice day, and so they did. They rowed out onto an island in the loch, and he then asked her to marry him, and produced the much travelled ring. We all stood on the side of the loch waving, waving a paw, and cheering. The manager of the boathouse came to ask us what was happening, and when we told him he said that we were quite welcome to use the boathouse for our champagne and cake celebrations. We all had a lovely time and of course you know me when cakes are around, I can always find a space to fit a small piece into, even though I must have already eaten a ton of sausages that morning on the pretence that I can't get my tablets down.

Well that's it for now, but I would just like to say that although I am older and slower now, I still enjoy going out and about. I have always been on holiday with Carla and Klaus, and I have had lots of fun with them, and our friends.

Hope you all have a Great Christmas,

Happy New Year

Bye for now Zillah

.....Oh guess what I have just found in the cupboard, a Giant Christmas Cake, someone left the door open so I just have to investigate!!!.....Bye Bye.



## CONGRATULATIONS

have to go to Bailey CARABRAE MAD AS A HATTER AT KELLTARA and also to his owners Pat and Steve Phillips. At the North East Working and Pastoral Breeds Show held on the 11th October 2008 he not only won his class, he then went on to win BEST IN BREED. However it wasn't to end there he went on to win the PASTORAL GROUP. There were 18 dogs in the group on that day. There after he went up against the winner of the Working Group and WON ending up **BEST IN SHOW.**



This is a first for the breed in this country and a superb achievement. Obviously Pat and Steve were very proud of Bailey and literally over the moon. A big pat goes to Bailey.



Congratulations also go to Ricaud (Riacaud Ultra-Paree Match avec Rozimba) who took second place (out of a field of 15) in the YKC Stakes at Bournemouth Championship Show. This means that he has become the first Pyrenean Sheepdog to qualify for the YKC Stakes final at Crufts next year. This is a super achievement since only a maximum of 20 dogs from the Pastoral Group are allowed to qualify. Well done Ricaud and well done Toni (Wescott-Smith).



## Discover Dogs 2008

Discover Dogs was held on the 8th and 9th November at Earl's Court. Once again members of the PSD Club of GB manned the breed stand on both days. It was a nice surprise, when we got there, to find that the stand was on a corner site and was facing into the hall, which meant that we could see more of what was going on. The stand looks very good when it is put together these days with some new photos and headings.

There was a steady stream of interest at the stand. Even after all this time there are still people who haven't heard of the breed although on the whole most people have heard of, seen or know someone with a Pyrenean Sheepdog. Quite a few people commented on how alert the and also how well behaved the dogs were.

On Saturday the stand was manned by John and Julie Farrer with Shonie and Cloe, the Marsden family with Lara and Liz and Chris Lewis with Ria and Meg. This was Lara's debut on the stand and she coped very well indeed. Her owners took her home at lunchtime as she had had enough by then. It's best not to let a dog stay on the stand too long for their first time. It is quite a daunting experience with all the people and the noise. On Sunday the stand was manned by Roy Norman and Fleur, Carole and Ian Conway and Bleu and Klaus and Carla Senkpiehl. Zillah is too old to go on the stand these days and was looked after by some friends. It was Bleu's first time on the stand and Carole and Ian sensibly took him home after about four hours.

There was some excitement on Sunday when Peter Purves (of Blue Peter fame) arrived at the stand with a film crew from the Horse and Country Sky channel. Fleur was filmed with Peter while he did a little commentary.

I would like to thank all those who gave up their time to help on the stand and it was a pleasure to have some new recruits. Liz Lewis



If you mated  
a Bulldog  
and  
a Shitzu  
would it  
be called  
Bullshit?

## PYRENEAN SHEEPDOG WINS NOVICE

IS THIS A FIRST? At Eden Vale Open Obedience Show, July 08 PARBROOK YESTIN or Fun a 16 month old Pyrenean Sheepdog was first in Novice Dog, I believe this is definitely a first for Pyreneans, and as the breeder it makes me extremely proud.

Fun was born on 7<sup>th</sup> March 07 with his two brothers and sister, Gypsy his mum was a super mum, she loved her pups and spent hours playing with them. They were all very boisterous outgoing pups, into everything and inquisitive.



Fun left for his new home at eight weeks, his new owner had other dogs and was experienced in training for both Obedience and Agility. He loved his training, and very soon had passed his Bronze Good Citizen and a couple of months later his Silver.

He has continued to compete every weekend at Open and Championship Shows, but though his ring work has put him in the cards he got spooked in stays, and it wasn't until 26<sup>th</sup> July at Eden Valley Open Obedience Show that he put it all together and won. Judges comments were- The handlers control of the dog during the test is what won this class. Pet name of "FUN" certainly suits him-Well Done.

Fun has gained many places in Novice Open and Championship Shows during the summer, but it wasn't until the 13<sup>th</sup> September he pulled out all

the stops and did it again.

At Stanhope Agricultural Open Obedience Show, Fun once again came 1<sup>st</sup> in Novice, judges comments were-Fun lived up to his name and was a delight to watch and admire, clearly both Fun and Fiona enjoy what they do so well.

I definitely believe this is a FIRST for a PYRENEAN SHEEPDOG and I am so proud of Fun and his owner Fiona. In October they both made the 7 hour journey down to our Fun Day for all the Pyrenean Pups I have bred, plus their relations, I was thrilled to see him and watch them both give a demonstration Novice Round, it was brilliant and easy to see why he is being so successful in Obedience.

Fun only needs one more Novice win and then he will go into A and maybe B classes, Fiona tells me she will be training for these during the winter months, good luck, he has all the grounding needed to go on up through the classes.

I was thrilled to be asked by our Pyrenean Committee if I would like to present a Trophy which is to be awarded annually for the Pyrenean with the highest points in Obedience, I have chosen a STAR AWARD, its to be called PARBROOK PYRENEAN SHEEPDOGS OBEDIENCE TROPHY, and if one of the pups I bred should win it I will be over the moon with pride.

*Jean Rawlings*



# Championship Show Results



## Paignton

4th-6th August 2008

Judge: Mrs Clare Coxall

Best Dog : 558 PHILLIPS Mrs P  
Carabrae Mad As A Hatter at Kelltara  
Res Best Dog : 563 WESCOTT-SMITH Mrs T  
Riacaud Ultra Paree Match avec Rozimba  
Best Bitch : 559 PHILLIPS Mrs P  
Merrywood Dancing Queen at Kelltara  
Res Best Bitch : 557 MORLEY, Mrs S A &  
ROGERSON Mrs A  
Merrywood Rising Star Avec Chikaramor  
Best Puppy : 556 FLINT Mrs S & Mr E  
Merrywood Efren At Sandytrail  
Best Veteran :  
BEST OF BREED : 559 PHILLIPS Mrs P  
Merrywood Dancing Queen at Kelltara

Class 176 JD/B (3 Entries) Abs: 0

1st: 556 FLINT Mrs S & Mr E

Merrywood Efren At Sandytrail

2nd: 562 SMITH Mrs W A

Carabrae Pink Petunia With Thymewinds

3rd: 554 CAFFERATA Mr M L & Mrs F A

Merrywood Eshana

Res:

VHC:

Class 177 PGD/B (4 Entries) Abs: 0

1st: 558 PHILLIPS Mrs P

Carabrae Mad As A Hatter at Kelltara

2nd: 561 RANDALL, Mr F J & RANDALL Miss K

Kimrand Bonne Amie

3rd: 555 CAWLEY Miss M

Rambauds Jaune Hareng Fume (Imp)

Res: 553 CAFFERATA Mr M L & Mrs F A

Hob-nob's Baptiste At Carabrae

VHC:

Class 178 OD/B (4 Entries) Abs: 1

1st: 559 PHILLIPS Mrs P

Merrywood Dancing Queen at Kelltara

2nd: 557 MORLEY, Mrs S A & ROGERSON Mrs A

Merrywood Rising Star Avec Chikaramor

3rd: 563 WESCOTT-SMITH Mrs T

Riacaud Ultra Paree Match avec Rozimba

Res:

VHC:



AD 1562

## Richmond

5th-7th September 2008

Judge: Mrs Eleanor Bothwell

Best Dog : 3363 WESCOTT-SMITH Mrs T

Riacaud Ultra Paree Match avec Rozimba

Res Best Dog : 3357 PHILLIPS Mrs P

Carabrae Mad As A Hatter at Kelltara

Best Bitch : 3358 PHILLIPS Mrs P

Merrywood Dancing Queen at Kelltara

Res Best Bitch : 3362 SUCH Mr C J & Mrs P M

Merrywood Electra At Norlyght

Best Puppy : 3362 SUCH Mr C J & Mrs P M

Merrywood Electra At Norlyght

Best Veteran :

BEST OF BREED : 3358 PHILLIPS Mrs P

Merrywood Dancing Queen at Kelltara

Class 851 JD/B (4 Entries) Abs: 1  
1st: 3362 SUCH Mr C J & Mrs P M  
Merrywood Electra At Norlyght  
2nd: 3354 DEUCHAR, Mrs M & DEUCHAR Miss D  
Merrywood Essien  
3rd: 3355 FLINT Mrs S & Mr E  
Merrywood Efren at Sandytrail  
Res:  
VHC:

Class 852 PGD/B (4 Entries) Abs: 1  
1st: 3357 PHILLIPS Mrs P  
Carabrae Mad As A Hatter at Kelltara  
2nd: 3361 SMITH Mrs W A  
Carabrae Pink Petunia With Thymewinds  
3rd: 3365 WESTON Mrs M P  
Rambauds Triomphe Du Noel (ah2)  
Res:  
VHC:

Class 853 OD/B (5 Entries) Abs: 2  
1st: 3358 PHILLIPS Mrs P  
Merrywood Dancing Queen at Kelltara  
2nd: 3363 WESCOTT-SMITH Mrs T  
Riacaud Ultra Paree Match avec Rozimba  
3rd: 3365 WESTON Mrs M P  
Rambauds Triomphe Du Noel (ah2)  
Res:  
VHC:



**Darlington**

**12th-14th September 2008**

Judge: Mrs Karen DalGLISH

Best Dog : 4808 PHILLIPS Mrs P  
Carabrae Mad As A Hatter at Kelltara  
Res Best Dog : 4815 WESCOTT-SMITH Mrs T  
Riacaud Ultra Paree Match avec Rozimba  
Best Bitch : 4809 PHILLIPS Mrs P  
Merrywood Dancing Queen at Kelltara  
Res Best Bitch:4801 CAFFERATA Mr M L & Mrs F  
Merrywood Dark Image  
Best Puppy : 4799 CAFFERATA Mr M L & Mrs F  
Merrywood Eshana  
Best Veteran : 4801 CAFFERATA Mr M L & Mrs F  
Merrywood Dark Image  
BEST OF BREED : 4809 PHILLIPS Mrs P  
Merrywood Dancing Queen at Kelltara

Class 1436 VD/B (2 Entries) Abs: 0  
1st: 4801 CAFFERATA Mr M L & Mrs F A  
Merrywood Dark Image  
2nd: 4806 NEWTON, Miss D & JANSON Miss S  
Carabrae Xanthi  
3rd:  
Res:  
VHC:

Class 1437 PD (2 Entries) Abs: 0  
1st: 4803 FLINT Mrs S & Mr E  
Merrywood Efren at Sandytrail  
2nd: 4802 DEUCHAR, Mrs M & DEUCHAR Miss D  
Merrywood Essien  
3rd:  
Res:  
VHC:

Class 1438 YD NO ENTRIES

Class 1439 PGD NO ENTRIES

Class 1440 OD (4 Entries) Abs: 0  
1st: 4808 PHILLIPS Mrs P  
Carabrae Mad As A Hatter at Kelltara  
2nd: 4815 WESCOTT-SMITH Mrs T  
Riacaud Ultra Paree Match avec Rozimba  
3rd: 4800 CAFFERATA Mr M L & Mrs F A  
Hob-nob's Baptiste At Carabrae  
Res: 4807 NEWTON, Miss D & JANSON Miss S  
Carabrae Daniel Deronda at Nidasha  
VHC:

Class 1441 PB (4 Entries) Abs: 1  
1st: 4799 CAFFERATA Mr M L & Mrs F A  
Merrywood Eshana  
2nd: 4814 SUCH Mr C J & Mrs P M  
Merrywood Electra At Norlyght  
3rd: 4818 WILLIAMS Mrs C A  
Ivydale Olivia  
Res:  
VHC:

Class 1442 YB (4 Entries) Abs: 1  
1st: 4813 SMITH Mrs W A  
Carabrae Pink Petunia With Thymewinds  
2nd: 4811 PHILLIPS Mrs P  
Carabrae Penelope Pitstop At Kelltara  
3rd: 4816 WILLIAMS Mrs C A  
Carabrae Over The Rainbow Of Ivydale  
Res:  
VHC:

Class 1443 PGB (3 Entries) Abs: 0  
1st: 4817 WILLIAMS Mrs C A  
Carabrae Katriona Of Ivydale  
2nd: 4812 ROBSON Mrs R  
Ivydale Nightjar  
3rd: 4813 SMITH Mrs W A  
Carabrae Pink Petunia With Thymewinds  
Res:  
VHC:

Class 1444 OB (1 Entries) Abs: 0  
1st: 4809 PHILLIPS Mrs P  
Merrywood Dancing Queen at Kelltara  
2nd:  
3rd:  
Res:  
VHC:

## DARLINGTON SHOW

### JUDGES REPORT

13th SEPTEMBER 2008

Thank you to the exhibitors for giving me a record entry of 20 with only 2 absentees for this delightful breed. Since I entered the breed a little over 4 years ago I feel it has progressed

and improved slowly. I ask breeders and exhibitors to continue keeping the Pyrenean Sheepdog as it is, totally natural in its presentation. I also feel at the moment that the quality of the girls is slightly better than that of the boys.

#### Veteran D/B -- 2 entries

1. Cafferata's MERRYWOOD DARK IMAGE. Very nice grey girl, liked her very much, typical head with dark expressive eyes. Liked her reach of neck onto lean strong body of good shape. Good front legs and feet, strong hind quarters. Active mover, particularly liked her effortless side gait. She is the mother of my eventual BOB winner. Best Veteran & Reserve Bitch.
2. Newton/Janson's CARABRAE XANTHI. Another grey and very close up to 1 for head pattern and shape, deeper in chest and not so lean. Positive on the move with with minimum lift of feet. Two very veterans.

#### Puppy Dog -- 2 entries

1. Flint's MERRYWOOD EFREN AT SANDYTRAIL. Fawn, masculine head without being coarse liked his expression. Body of good shape, harsh coat, did stand ten to two; this could be a "baby trait", good hindquarters with just enough stifle. Steady and sound on the move.
2. Deuchar's MERRYWOOD ESSIEN. Fawn and litter brother to above. I did like this boy, such a good head and alert expression, good neck onto a lean body. Front and rear angulations adequate, movement sound and effortless.

#### Yearling Dog --- No entries

#### Post Graduate Dog -- No entries

#### Open Dog -- 4 entries

A lovely class of excellent males, all could change places on another day. Headed by.....

1. Phillips' CARABRAE MAD AS A HATTER AT KELLTARA. Fawn, very typical for size and

shape. Liked his head, ear carriage, dark almond eye with cheeky expression. Neck set into well placed shoulders. Straight legs, strong powerful hindquarters. Ribs slightly rounded onto good croup. Moved freely once he was settled. **BEST DOG**

2. Westcott-Smith's RIACAUD ULTRA PAREE MATCH AVEC ROZIMBA. This is a lovely dog in profile, typical head and expression, Liked his depth of muzzle, body lean and strong, well muscled hindquarters, tail carried low. Side gait very good. Beautifully handled and presented. **RESERVE DOG**
3. Cafferata's HOB-NOB'S BAPTISTE AT CARABRAE

#### **Puppy Bitch -- 4 entries (1a)**

A lovely class of puppies with so little to choose between them, difficult decisions had to be made.

1. Cafferata's MERRYWOOD ESHANA. Stunning fawn puppy, lovely head, dark expressive eyes with enquiring expression, liked her reach of neck on to lean well shaped body. Short sloping croup, well angulated rear, strong and positive on the move, could not deny her **BEST PUPPY**.
2. Such's MERRYWOOD ELECTRA AT NORLYGHT. Another nice pup with typical head and expression liked her body shape and size, good rear end, little proud tail, but sound and active on the move.
3. Williams' IVYDALE OLIVIA. Completed an excellent class of baby girls.

#### **Yearling Bitch -- 4 entries (1a)**

1. Smith's CARABRAE PINK PETUNIA WITH THYMEWINDS. Nice size fawn with best of heads, alert expression. Liked her shape and body proportions, good front and feet, would like her more positive behind.
2. Phillips' CARABRAE PENELOPE PITSTOP AT KELLTARA. Stronger made fawn, liked her

head and particularly her ear carriage, body shape good as was the texture of her coat. Would benefit from a little less weight which did spoil her movement.

3. Williams' CARABRAE OVER THE RAINBOW OF IVYDALE.

#### **Post Graduate -- 3 entries**

1. Williams' CARABRAE KATRIONA OF IVYDALE. Nice class. Thought her quite typical of the breed, liked her head and lively expression, good front and strong hindquarters. Nice in profile, active and agile on the move.
2. Robson's IVYDALE NIGHTJAR. Another nice one, little stronger made all through but liked her shape, front and rear angles, moved out positively, liked her side gait.
3. Smith's CARABRAE PINK PETUNIA WITH THYMEWINDS.

#### **Open Bitch -- 1 entry**

1. Phillips' MERRYWOOD DANCING QUEEN AT KELLTARA. Lovely typical fawn, bigger than I would normally go for, but she is so correct in conformation. Feminine head, dark well shaped eyes, good pigment, alert expression and flexible ears. Liked her front, feet and hind quarters, finished off with short strong hocks. Good body shape, correct harsh coat texture. Little proud of her tail, but she is so sound and shows the typical effortless gait of this breed. **BEST BITCH, BEST OF BREED**

Karen Dalglish Judge



**Merry Christmas**



# Diary of Shows with PSD Classes

## CHAMPIONSHIP SHOWS

MONTH	SHOW	Show Secretary
MARCH 08.03.09	CRUFTS NEC BIRMINGHAM	THE KENNEL CLUB 08706066750
APRIL 18.04.09	WORKING & PASTORAL BREEDS OF WALES. BUILTH WELLS, POWYS	JAN RUAL
MAY 09.05.09	BIRMINGHAM NATIONAL STAFFORD	MRS VALENTINE 01536 791399
JULY 03.08.09	PAIGNTON EXETER, DEVON	MRS HODSALL 01364 642420
JULY 18.07.09	NATIONAL WORKING and PASTORAL BREEDS SOC. MALVERN, WORCS.	MRS M SCRUTTON <a href="mailto:puligemeau@aol.com">puligemeau@aol.com</a>
JULY 23.07.09	EAST OF ENGLAND PETERBOROUGH, CAMBS.	MRS BROADBERRY 01636 636660
SEPTEMBER 12.09.09	RICHMOND GUILDFORD, SURREY	DR R. JAMES 05602 318955
SEPTEMBER 19.09.09	DARLINGTON RIPPON, YORKSHIRE	MRS MARSHALL 01325 312484

## OPEN SHOWS

MONTH	SHOW	Show Secretary
JANUARY 31.01.09	HUDDERSFIELD	MRS JACKSON 01484644246
FEBRUARY 07.02.09	NEWARK & DISTRICT	MRS LOADES 01406701007
FEBRUARY 08.02.09	NORTHWICH CHESHIRE	MR WEBSTER 01606832627
FEBRUARY 14.02.09	National Working and Pastoral Ryton on Dunsmore, Coventry	MRS CAROL CANTY 01636893536
MAY 02.05.09	NEWARK AGRICULTURAL SHOW	MRS BROADBERRY 01636636660
MAY/ OCTOBER	North East Working and Pastoral	MR K. YOUNG 01357520730
OCTOBER	South West Working and Pastoral Clevedon, North Somerset	MRS PAYNE 01752 862654
NOVEMBER	Northwich Cheshire	MR WEBSTER

