

SUMMER 2015

PYRENEAN SHEEPDOG

The Newsletter of the Pyrenean Sheepdog Club of Great Britain



Welcome

Hopefully everyone will find something of interest for them in this Summer's Newsletter. As always the content depends on what is received. Please let the Editor know what you are doing with your dogs whether this is in competition or something else of importance. There is no doubt that the rest of the membership want to hear about it. Let us know if there is something you want to hear about and we will try to commission it.

This time we have started two new features the first one is Handy Hints. The aim is to share with the rest of the membership those ideas that make it so much easier to care for your dog. No hint will be too small, just let us know. From now on we will be including all the information that is contained in the Kennel Club Breed Records Supplement. This will include Registrations, Transfers of ownership, Change of names, Hip and Elbow scores. We

will also from time to time make a note of the actual numbers of registrations.

For the first time since we have changed the format of the Newsletter we have included a paid for advert. This is an important development since it will help fund the Newsletter. Clearly we would like to include more in future so if anyone wishes to place an advert please get in touch with the Editor. We can help with the format and design if that is required. The prices are as follows:- £20 for a full page black and white, £15 for a half page black and white. Other rates apply if colour is wanted and discount is available if an advert is in all three issues in the year.

This is an exciting time for the club starting with the first Club Open Show on 31st August. There is no doubt that the next issue will be a bumper one.

BREED SEMINAR AND HANDS ON ASSESSMENT

on the Pyrenean Sheepdog (Long Haired)

Date:- 25th October 2015

Arrival:- 9.00 for 9.30 Start

Place:- Bearley Village Hall, Snitterfield Road, Bearley, Warwickshire. CV37 0SR

Speaker:- Alain Pécoult, President RACP & PSD Club of GB

Further information from Liz Lewis, Hon. Sec PSD Club of GB via website

Booking forms can be downloaded from the PSD Club website

www.pyreneansheepdog.co.uk

The cover picture this time is Chloe Carabrae Sauterelle.

Contact the Committee

President

Alain Pécoult

e-mail :- alainpecoult@gmail.com

Chairperson and Newsletter editor

Dr Chris Lewis

Tel:- 0116 2881174

e-mail:- riacaud@mac.com

Vice-Chairperson

Klaus Senkpiehl

Tel:- 01530 242759

e-mail:- klaus.senkpiehl@talktalk.net

Secretary

Liz Lewis

Tel:- 0116 2881174

e-mail:- riacaud@mac.com

Treasurer

Carla Senkpiehl

Tel:- 01530 242759

E-mail:- carla.senkpiehl@talktalk.net

Committee Members:-

Eion Flint

e-mail:- sandytrail@btinternet.com

Tel :- 01751 432599

Sheila Janson

e-mail:- nidasha@btinternet.com

Tel :- 01777 818954

Diane Newton

e-mail:- nidasha@btinternet.com

Tel :- 01777 818954

Cynthia Milnes

e-mail:- cynthiamilnes@gmail.com

Tel:- 01606 74792

Jonathan Pattison

e-mail: jonathan@hal5000.co.uk

Tel :- 07908 20042

Kim Randall

e-mail:- kim.randall@tesco.net

Tel :- 01733 252694

Pat Wescott

e-mail:- p.d.wescott@btinternet.com

Tel:- 01484 865363

Vicky Wilford Health Rep.

e-mail:- v.wilford464@btinternet.com

Tel :- 01453 885406

DEADLINE FOR NEXT ISSUE:-15.11.15

send by e-mail to riacaud@mac.com

VISIT THE CLUB WEB-SITE

www.pyreneansheepdog.co.uk

Web site editor :- Mike Williams

Copyright of information and articles included in this newsletter remains with the club and/or the author. Reproduction by any means is not allowed without written approval of the author.

Disclaimer :- The newsletter contains articles and information provided by members and non-members of the PSD Club of GB. The club wishes to make it known that the inclusion of material in this newsletter does not necessarily indicate approval or reflect the opinions of the club or the editor. Also, whilst every care has been taken to ensure the accuracy of the content, neither the Club nor the editor can be held responsible for any inaccuracies.

BITS AND PIECES FROM THE SECRETARY

CODE OF ETHICS

Over the last couple of years, the committee has had to deal with several issues with regard to the Code of Ethics. The club is required by the Kennel Club to have a Code of Ethics, a copy of which has to be sent to the Kennel Club as part of the Annual Returns. Any changes that the club wishes to make to the Code of Ethics have to be approved by the Kennel Club.

The Code of Ethics exists to protect the health and well being of the Pyrenean Sheepdog. The committee, as the elected representatives of the membership, are duty bound to ensure that the Code of Ethics is upheld. All members of the PSD Club of GB are expected to abide by the Code of Ethics. The following wording has now been added to the Application for Membership form and to the Renewal of Membership form "**I/We have read the Constitution and Rules and the Code of Ethics of the Club and agree to abide by them**". If any member needs advice on any aspect of the Code of Ethics, please contact a committee member for clarification.

FUTURE EVENTS

Open Show:-Monday 31st August at the KC Building Stoneleigh. Judge Alain Pécoult. Even if you haven't entered a dog, you may like to come along and support those who have.

Agility Day:-Saturday 12th September at Bench Barn Farm, Stoke Road, Clare, Sudbury, Suffolk CO10 8HQ. Start time 10.00. Entry form and further details can be obtained from Liz Lewis.

Judging Seminar and Hands on Assessment:-Sunday 25th October at Bearley Village Hall, Snitterfield Road, Bearley, Warks CV37 0SR. Start time 9.00 Booking forms can now be downloaded from the PSD Club website or are available from Liz Lewis.

Open Show:- 10th April at Bearley Village Hall, Snitterfield Road, Bearley, Warks CV37 0SR. Judge Norbert Gainche. Further details will be available in due course.

Discover Dogs & The National Pet Show

Discover Dogs will be held on the 18th & 19th October at ExCel, London. We have also been invited to represent the Pyrenean Sheepdog at the National Pet Show at the NEC on 7th & 8th November. We are therefore looking for members to help at both these events. We hope to have enough volunteers to have two separate groups of members at each event.



The Obreedience team lives on and is hoping to qualify to compete at Crufts 2016.

The format for qualification is different this time, in that we have to attend heats in order to gain points. Four heats will be held under the umbrella of Breed, General Canine or Obedience shows. Teams will collect points from each heat with the top ten teams being invited to compete in the final at Crufts 2016.

The team consists of Pauline Keable (Team Leader) with Fizz, Jeanna Gwilliam with Kheva, Diane Newton with Piri, Liz Lewis with Geordi, Cynthia Milnes with Pussel and Margaret Challans with Deva.

HEALTH CO-ORDINATORS COLUMN

The KC tells me there is a new section on their Kennel Club Web Site.

Pet Health Information --- There are articles on various conditions Fleas, Grass Seeds, Mites, Pyometra, Arthritis, Bloat, Obesity, Poisons and lots more

Well worth a look

Vicky Wilford



Pussel an ambassador for the breed

Pussel (Swe/Nor Ch Hob-Nob's Soleil of Jentilima) and his owner Cynthia Milnes have achieved a lot of positive publicity for our lovely breed in the last few months.



Cynthia is an Area Coordinator for Pets As Therapy (PAT) and is responsible for the charity's volunteers in Mid Cheshire. She recently invited the local newspaper, which has a large circulation, to her home and about ten of her volunteers and their PAT dogs attended a photo session.

The reporter and photographer were amazed when they arrived, at the sight of all the dogs, from a Great Dane to a tiny Havenese all happily mixing together never having previously met. Pussel was more than happy to play host and thoroughly enjoyed his afternoon which had a garden party atmosphere.

Cynthia had also picked up a request on Facebook from Dogs Monthly magazine in which they were asking Pets As Therapy volunteers to submit a photo, and an accompanying article explaining the positive benefits to patients who received visits from Pets As Therapy dogs, and also the experiences of the owners of being a volunteer for the charity. Apparently they were overwhelmed with volunteers sending in articles, but Cynthia and Pussel were one of the few chosen to appear in the June edition of the magazine.

Her work with the charity continues to grow and Cynthia and Pussel are becoming regular visitors to WIs, U3As and other organisations, promoting Pets As Therapy and of course the Pyrenean Sheepdog.

Pussel's photograph has also appeared much further from home. "New Zealand Dog World" Monthly magazine published an article on rare breeds and the Pyrenean Sheepdog featured earlier this year.



Pyrenean Sheepdogs

Du Pic De Pioulou

Belgium

Veerle Vlerick & Eddy Van Pelt



www.dupicdepioulou.be

*Pyreneese Herders
Bergers des Pyrénées
Pyrenean Sheepdogs*



More than 20 years experience in the breed. Passionate breeders focussing on socialisation, character and show quality.

Puppies available from time to time. We export to the UK.

Don't hesitate to get in touch for details.

Stud Dog also available: Multi Ch. Foli Du Pic De Pioulou

www.dupicdepioulou.be Email:- info@dupicdepioulou.be

Tel:- 00 32 479 64 25 66

FUN DAY 2015

Once again the Fun Day was held at Bearley Village Hall, near Stratford on Avon. It was decidedly cool when the committee arrived to get everything set up and we could only hope that it would become warmer and stay dry.

Before long members and their dogs started to arrive and tea and coffee was served. At 11.00 the Chairman welcomed everybody and outlined the programme of events for the day. After this most people set off for the walk led by Di and Sheila.

Once everyone had settled down after the walk, Carl Stretton gave a very informative Power Point presentation comparing and contrasting the Pyrenean Sheepdog (Face Rase) with the Pyrenean Sheepdog (Long Haired). Jet, Finn and Geordi acted as models to highlight certain aspects of both types. Lunch followed the talk and Pat Wescott was busy persuading people to buy raffle tickets.

There was a heavy shower during lunch which sent everyone indoors.

The group photo was taken after lunch. Eventually all the dogs and their owners kept still enough for the photos to be taken!

The Obreedience team then gave a demonstration of the exercises that they had performed when they had competed at Crufts. As tradition dictates, the afternoon is devoted to the Novelty classes and games. The Novelty classes were judged by Carl Stretton. Some light rain during these events did not dampen spirits. Eion Flint also ran his Have a go in the Show Ring again as the Open Show is coming up. This culminated in a mini show judged by Kim Randall with Carl Stretton and Finn being the winners.

All too soon, tea and cakes were being served and the day was coming to an end.

Thank you to everyone who came to make it such an enjoyable and successful day. 39 people with 31 dogs attended. We look forward to seeing you all again next year.

Results of the Novelty Classes

Most Handsome Dog
Tyler with Sheila Janson

Prettiest Bitch
Amber with Emily

The Waggiest Tail
Finn with Adam Stretton

The dog the Judge would like to take home
Tyler with Sheila Janson

Heads and Tails
Kheva with Jeanna Gwilliam

Fastest Recall
Deva with Margaret Challans



Congratulations to Pauline Keable and her dogs who have both been awarded Silver Good Citizen's awards.

Fizz Rambauds Xonville

Piri Sawara Double Trouble

⌘⌘⌘⌘⌘

Congratulations to Jeanna Gwilliam and Kheva Norlyght Sebelus of Amienko who have qualified for the Semi-Finals of the Kennel Club Good Citizen Dog Scheme Pre-Beginners Obedience Stakes to be held at Discover Dogs later in the year.

⌘⌘⌘⌘⌘

LILY



Hello, I thought that I had better let you know what I have been up to as I know you all must be waiting in anticipation to hear about my latest escapades. Well, we have not been away on our holiday yet, and we have not been to Norfolk to stay with our friends Sue and Geoff who now live there after moving from Wales. They moved just before Christmas and have started to renovate a bungalow. Carla has been telling me that it is still not quite finished inside yet, but we will be going over soon now and I am looking forward to that. They moved there with their dog Saffy a Briard. I have always known Saffy and although she was much older she was always tolerant of me, never getting cross with my silly puppy antics when I was younger. Sadly Saffy has died and Sue and Geoff are very unhappy without her. Carla was talking to Sue on the phone the other day and Sue told her that when they have finished the inside of the bungalow they will look for another puppy to

live with them, I am very excited now and look forward to lots of fun.

Oh! I must tell you what happened a few weeks ago in our village. We dogs and our owners all get together and meet up every morning between 9.30 and 10am. This has become a talking point with a lot of people and we keep getting new recruits to join us when they move into the village. One particular morning we arrived to find cones, discs, and various other equipment in the middle of what has been aptly named the Conversation Area by our local councillor. I must say, that the humans do a lot of talking every morning while we run around like mad things, chasing each other and generally getting into trouble. One minute the humans are merrily chatting away and the next we see them frantically waving and shouting to us. we never know what they are trying to tell us, there are no clear hand signs or anything that we might understand, so we more or less ignore them. We find that if we adopt this approach they eventually calm down and carry on talking to each other. but this particular morning, I have to say, turned out to be rather different. Just as we were all let off our leads and getting ready to start running around we were stopped in our tracks as we watched loads of children walking onto the field. Following on behind we noticed a grown up carrying equipment to put around the field and after a while we began to get fed up with all of this because we didn't know where to run for the best! The humans who were still talking whilst slowly moving away from the conversation area then stood at the side of the field to watch what was going to happen next. The Children and the grown up started putting cones and disks around the field and coloured stakes were hammered into the ground. We dogs did not know what was going on and we were quite disgruntled that our field was being

invaded. The children lined up to start running with their footballs round and round the cones and back to the other side of the field again. more and more children joined in. They kicked their footballs around the cones, and, one by one they managed to get to the other side. After the last child had got half way around the course we all decided to join in (well you would wouldn't you if you were a dog.)We thought that we were doing a good job helping the children out and the humans would be pleased with us especially for collecting and picking up the cones and disks and running off with them. Around the field we went some dogs with discs, some dogs dragging cones and some just running. I have to say that after leading the others in a lap of honour we left our cones and disks and returned to our owners who seemed in a great hurry to get us on our leads to go home.

Just as we were being dragged away, out of sight, I noticed all the children rushing around picking up the cones that we had left behind us.

The next day we arrived on the field and we were glad to see that the conversation area and the rest of our field had been left clear of equipment obviously ready for us to use again.

But I noticed out of the corner of my eye that there were lots children and the grown up, complete with the equipment wedged in the five aside football enclosure adjacent to the field.....Umm... I wonder why!

That's all from me for now, Lily.

ADVANCE NOTICE

Pyrenean Sheepdog Club of GB 2nd Open Show

Held in conjunction with the Catalan Sheepdog Club of GB

Date:- 10th April 2016

***Place:- Bearley Village Hall, Snitterfield Road, Bearley
Warwickshire, CV37 0SR***

Judge:- Norbert Gainche

Further details available in due course



VET'S CORNER



During the summer and autumn months ticks can be a problem for our dogs, especially when walking in the woodland, countryside or in grassy areas. This article aims to provide information on ticks, how to prevent them and what to do if your dog gets one.

What are ticks?

Ticks are external parasites that attach to any part of your dog and feed from his blood. When they are picked up they are only the size of a pin-head, but as they feed their body grows in size (to about 1cm) and can be very unsightly in appearance, often being mistaken for skin growth. If left, a tick will detach itself after a full feed usually taking around 7 days. Most ticks that affect dogs and cats in the UK are sheep or deer ticks.

Tick life cycle

The tick life cycle lasts about 2 years and at each stage the tick only feeds once. The smaller larva and nymph tend to attach and feed on smaller animals such as rodents and small hares, while the adult stages more often feed on larger animals such as badgers, dogs, sheep and humans!

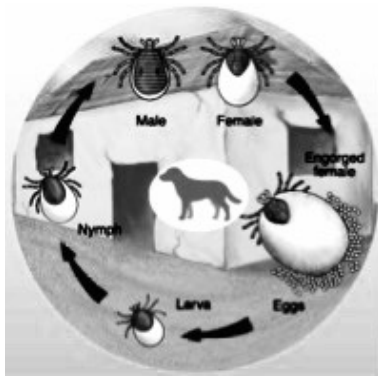


Image from
(www.vetstream.com)

Tick diseases

Ticks are able to transfer disease to your dog, and the longer they are attached the more likely this is. On attaching the head and legs of the tick anchor under the skin and saliva is released from the mouthparts to aid digestion of the tissues. This causes a local reaction

around the bite and your dogs' skin can become sore and infected so prompt removal is advised.

In parts of the UK (e.g. New Forest, South Downs, Exmoor, Lake District) some ticks can carry Lyme disease by passing a microscopic organism called *Borrelia burgdorferi*. The symptoms can be vague but include stiffness/ lameness, painful joints, poor appetite, high temperature and enlarged lymph nodes. If a diagnosis is made treatment with antibiotics, pain killers and rest will eliminate the bacteria but treatment may be required for several weeks.

How to remove

It is advisable to remove a tick when seen, either yourself or at your local vets and it is very important to remove all legs and mouthparts. The best method is to use a tick remover (e.g. o'tom tick twister). Scooping the legs under the ticks' body then twisting will ensure all legs and mouthparts are removed. Suggestions such as dabbing Vaseline, butter, nail varnish or just pulling are not advised. These methods will not kill ticks and only makes the tick panic and release all enzymes and any disease into your dog.

Preventative medicine

There are preventative medicines available to stop your dog picking up ticks. These are advisable and are most important for dogs that are walked in high tick areas or in Lyme disease hot spots, especially during the summer and autumn. Some medicines kill the tick when they attach, and some prevent the tick from attaching. Examples of some medications include fipronil spot on (e.g. Frontline) to be applied monthly, fluralaner tablet (e.g. Bravecto) to be given every three months and flumethrin collar (e.g. Serresto) that lasts 8 months. Some of these medications can be used in combination with other preventative medications (such as flea and worm treatments) and it is advisable to speak to your local vet to ensure your dog is adequately protected.

Thanks for reading.

Heather Davies

Head Qualities and Expression of the Berger des Pyrénées

What I am going to tell you is nothing new, others have already made the same comments. However, we have to ask ourselves whether head qualities and herding expression are really taken into account in judging our breed.

The Head

This is the basic characteristic of any breed; it is what determines type. If breeders start neglecting this aspect, they might end up producing dogs without breed type...

Before doing a detailed examination, a judge must be able to tell at a glance whether it is a Pyrenean Sheepdog or not. What good is it for a dog to have good structure if it has a barely acceptable head or even one that does not reflect type?

Let's look at some essential components of the breed standard:

The Skull

The skull is moderately developed (but still relatively broad) and flat (the flattest of all the herding breeds), with a slight central furrow. The sides are harmoniously rounded. The occiput is very slightly pronounced. The front of the skull slopes gently to the muzzle, and the stop is therefore barely discernable. The head is triangular shaped. The lengthwise ratio of skull to muzzle is usually said to be two-thirds to one-third.

The Muzzle

The muzzle is straight and shorter than the skull, ending in a wedge.

The nose is black. The mucous membranes of the lips and palate are black or strongly marked in black.

Be careful to avoid muzzles that are either too short or too long.

The Eyes

The eyes are expressive and slightly almond-shaped. They should not be round or light-colored. They should be dark brown and not too closely set. Wall eyes are allowed in dogs with harlequin (merle) or slate gray coats.

The eyelids have a black border, whatever the coat colour. This characteristic, which used to be described as charcoal-marked, seems to be on the decline (it was said that the Pyrenean Shepherd wore mascara).

The Coat

The hair over the head and muzzle should look blown back (windblown). It must be distributed harmoniously on the head and muzzle sweeping from front to back.

On the tip of the muzzle, there are very little furnishings and very little beard.

The hair becomes gradually longer and well spread over the muzzle going towards the head.

It goes up from the muzzle to the skull along the sides of the skull and above the eyes over the back of the skull.

The hair should not hide the eyes. The coat should not be soft or fall forward to obscure the eyes or expression of the dog. Good hair implantation should give the impression that the head gets wider from the tip of the nose to the top of the skull.

Beware of an over abundance of coat over the head, the appearance of too much moustache, of bad implantation, or poor quality of coat which would produce coarse and heavy heads of the Nizinny type.(Polish Lowland)

The Ears

They are moderately wide at the base, placed relatively high on the skull. They should not be

set too close or too wide laterally. They are relatively short. The upper third or half of the ear tips over the lower part. They must be mobile and the lower part stand off the head. They must fall symmetrically to the front or sides of the skull. This is where it gets complicated...

The ears used to be cropped, and apart from the functional and hygienic reasons for this, the cropping emphasized the qualities of the head by making it look wider (see chapter on hair quality) when the cropping was done on a slant.

There is no recipe for good ears, but this is what I have observed:

Puppies with good ears at two months of age often tend to have a narrower skull. Beware of this. Moreover, if the ears are too light, they might turn out to be prick ears after 12 months...

Inversely, with a well-proportioned skull, the ears are often implanted more to the side and lower on the skull. Beware as this can also be an indication of a slightly rounder skull.

In both cases, the solution can be glue and tape, with various outcomes following the growth pattern, calcium intake and teething. Breeders should experiment to find what works best for them. There is no magical remedy; the only solution I can offer is a consistent observation of successive litters and a close study of all types of ears (thicker, lighter, short, moderately short, positions on the skull, shape, skull to muzzle ratio, etc.), as well as experimentation to find good breedings and good lines, which to me is the basic purview of the breeder, in any case.

One final comment: narrow skulls often reflect a loss of bone over several generations. The Pyrenean Sheepdog is a light dog, but not a shrimp by any means. In addition, narrow skulls can lead to missing teeth (incisors). Beware of too much inbreeding.

The Expression

Imagine a dog with just about all the required qualities. You will have a technically perfect

head (although there is no such thing as a perfect dog), but you will also have a lovely statue.

The standard states: Dog displaying a maximum of nervous energy in a minimum of size and weight. This sentence describes a dog with great energy and liveliness which give it a characteristic appearance unlike any other breed.

Originally, this was a working dog which constantly performed the job of a mountain sheepdog in difficult conditions (nature of the work itself, difficult terrain and weather conditions, long distances to travel, etc.). It was the working tool of the farmer and was often required to take the initiative and use its intelligence. For a long time, the remoteness of the valleys with scarce means of communication with the outside world would have meant a rough and lonely life in small hamlets and towns. This remoteness would have led to wariness when faced with the unknown. Any usual event would have seemed extraordinary. The Pyrenean Sheepdog has certainly inherited this trait. This highly contained way of life has definitely had an effect on the character (wariness of strangers) and genetics (inbreeding). This trait has been strengthened by the lack of outside stimuli over the generations and become ingrained in the breed.

Everything new puts the dog on alert, which explains its tendency to bark and ever-watchful attitude. The dog never stays still, it is constantly in movement, always watchful, always curious.

This nervous energy and sense of duty translates into a dog that tenses up, becomes rigid, with its head held high in watchfulness. Its eyes sparkle with liveliness and its whole face takes on a look of defiance, intelligence and cunning. The dog seems to be trembling with impatience even though it stays in one spot, yet its eyes see everything going on around him. It takes in its surroundings with a look that is all at once inquisitive, mocking, proud, sure of itself, facetious, curious and clever. This is often accompanied by barely audible whimpers and a series of looks that

reflect its intelligence in an expression which is in turn somewhat rebellious, haughty, proud and humorous. Such is the expression of the Pyrenean Sheepdog.

You can imagine it watching over the herd or the farm, on the lookout for any unusual movement. This timeless look and expressions will always be part of the breed. You can define it however you want, but what matters is to recognize this magic when it happens.

Of course, the world has changed and like mankind the Pyrenean Sheepdog has adapted. This does not mean breeders should be producing unsociable dogs. The Pyrenean Sheepdog has become a sociable animal, but it still retains some wariness in its makeup. Even if it were to lose this trait, it would not be the end of the world. What is most important is to continue raising and training these dogs to pique their all-encompassing curiosity. That is all their natural intelligence needs to manifest itself.

The typical expression of the Pyrenean Sheepdog will always be there, but it is important to remember that it will become meaningful only if the structure of the head conforms to the breed standard. I would encourage those who still find this concept a bit too abstract to observe a maximum number of dogs in all possible contexts. Then, one day when you are not necessarily expecting it, you will see the light and really get a feel for what it all means. Beyond the standard and its rational interpretation, there remains a part of romanticism that words can never fully describe...

Olivier Matz
Berger des Pyrenees du Picourlet, France

Translated into English by Michele Cousineau, Canada
A slightly different translation of this article was used by Terri Walker on her blog and she gave us permission to use it once it had been checked out with Olivier Matz.. However when we sort permission to use this article in the Newsletter Olivier Matz sent us this version so it was felt appropriate to use it since he was the author. Ed.

CONGRATULATIONS



Congratulations to Eion and Shane Flint for their achievements on the European Show circuit with their PSDs Sandytrail Encorcele (Blue) and Gastibelza de l'Oustaou de Padel (Gasti). Blue holds 7 CACs and 3 CACIBs and Gasti holds 7 CACS and 6 CACIBs from European Championship shows over the last 12 months. Particularly pleasing were their CAC wins at both the Belgian and Finnish National Breed Shows. Gasti has now been awarded his Champion title by the Belgian and Finnish Kennel Club's.

Congratulations also go to Pat and Steve Phillips. At National Working & Pastoral Breeds Ch Show 11th July Friponne was BOB under judge Mr Robin Newhouse and went on to be awarded Group 3 (this is her 7th Group placing) and then Best Rare Breed In Show under Judge Mr Jeff Luscott. A superb achievement.



Viewpoint

News and Views from the Breed Notes



The summer is going quickly and it seems just a few weeks ago that we were putting our articles together for the last club magazine. In thinking about what to report for this addition there were two things that I thought were worth bringing to club members attention.

Firstly, you may not yet have seen that the new annual subscription form downloadable from the club website has incorporated a change that now requires new and existing members to sign a declaration that they will abide by the club's constitution, rules and code of ethics. Sounds pretty obvious - so why the change? Well I guess in the past it's been taken for granted that everyone is covered by and will work within our club rules and framework but in the last few years there have been one or two occasions where the boundaries and limits have been tested by club members which always create difficult situations for your committee to deal with. The code of ethics in particular sets out some really important standards for welfare, health and good practice in owning and breeding your PSD. These tend to be a little bit more demanding and specific than the general framework set by the Kennel Club itself. The Kennel Club's own Code of Practice is in

reality a framework of minimum standards for breed clubs to work within but it is interesting that most breed clubs actually set more demanding standards for their breed than the KC framework and our club is no different in this regard. Our own Code of practice has been debated at length and has evolved over the year's and very much reflects how we as a club want our PSDs to be treated here in the UK. It really is important that everyone takes the time to understand the framework within which club members are expected to operate with their PSDs. The new process will at least draw everyone's attention to the issue annually and of course if the framework isn't right or needs to be changed we all have our AGM process as well as raising any proposals for change directly with your committee throughout the year.

Secondly, I thought with all of the news about immigration issues at Calais it was worth highlighting a Dog World breed note that I wrote in June reporting clear breaches of the Pet Immigration system also at Calais. The breed note itself explains the position.

"In last week's breed note I reported that we had recently returned from a trip to Finland in fact this was the 5th trip that we have been abroad to shows this year. On returning to Eurotunnel's dog check-in at Calais on this occasion, we were witness to some events that really sickened us. Waiting in the car park when we got there, were 4 large Mercedes Sprinter vans which were full of puppies in crates. By what we saw we estimated that each van had 7-8 crates with 2-3 puppies in each. What was particularly upsetting was to witness these individuals empty the contents of the crates on the grass in full view the passport control office. When I say empty I should say that the pups and their clearly soiled litter were dumped from quite a height (about a couple of feet) onto the grass. The breeds involved were English and French Bulldogs. To anybody with a reasonable knowledge of dogs it was clear that the pups couldn't have been more than 6-8 weeks so how could they get through passport control

when the rules make it clear that the youngest a pup can legally travel is 15 weeks and even that is pushing it. I could write at length about what went on but in the interests of brevity I would just say that we were around for about half an hour observing what went on and we could clearly spot the loopholes that allow this sort of activity to succeed. Firstly the Eurotunnel staff are only interested in processing paperwork, they take no interest in the dogs themselves. If the passport is OK then the dog and your vehicle are authorised to travel. In the case of these young puppies a reasonably experienced eye would spot that they are too young. If they have false documents then what are the chances that these pups have actually had their Rabies immunisation? The nature of the transport and just taking an interest in what was clearly happening outside of the control office should have rang alarm bells for the Eurotunnel staff. Surely they can't have missed what was going on?

Secondly, only a couple of pups per vehicle actually went in to the control office and yet we could clearly see the vehicles full of pups in crates. We stayed long enough to see one of the vehicles pass the control and make it's way through the customs barriers on the way through to the terminal. It is clear that these guys were taking a calculated risk that they would not be stopped and checked and I do not think it was any coincidence that they were travelling on the first shuttle that morning at 7am when only one UK customs post was actually operating. In the terminal we eventually saw all 4 vehicles rendezvous in the car park having successfully cleared customs. We did report what we saw to the UK customs officer when we went through passport control and he said that they were aware of the problem but had no powers to act on French territory, which to me seemed to defeat the point of them being there at all. They did say that the problem was being picked up in the UK by trading standards who follow up on the UK address and inspect the puppies which is fair enough but does seem to be closing the door after the horse has bolted.

Since getting back I have been in touch with Defra and Trading standards but they really

didn't want to know unless I have a specific case/breach to report in the UK. I have also been in touch with both of the breed clubs and I am glad to say both are taking the issue seriously and the English Bulldog Breed Liasion Council are already in discussions with Defra to provide evidence (pictures) of what a 16 week old pup would look like. Lets hope they get control of this situation soon. Whist this incident is not specifically PSD related I do think it is the responsibility of all experienced breeders that show abroad to report any obvious puppy farming activity and clear breach of the pet passport regulations. It would be good to hear from anyone that has had a similar experience."

Eion Flint
Breed Notes Writer - Dog World

HANDY HINTS

It has been suggested that given the wide experience of the membership that it would be a good idea for us to share things that we have found to work with our dogs or in their care.

To start the ball rolling Cynthia has sent this hint in. However don't hold back the more the better let's make this a regular feature. Ed.

" To avoid clogging up the washing machine with dog hair I purchased a fabric bag. You just put the dog beds in the bag and wash as normal. Mine is a "Moorland Rider" They are obviously useful to the horsey people for the same purpose, hence the name, but there are a number of companies out there doing similar products."

Cynthia Milnes



IN MEMORIAM



I wrote about my two lovely golden oldies in last years spring newsletter and said then that everyday was a bonus..

Well, unfortunately we had to say a sad farewell to our lovely Chloe at the end of November last year.

At 16 years 4 months we had to make that hardest of decisions and let her go.

We re-homed her at the age of nearly eight back in 2006 and she was a joy from day one and you couldn't have wished for a nicer dog. She loved nothing more than chasing her ball and following my husband John round the garden.

Even though we only had her for eight short years, it felt like we had owned her all her life.....our little star Chloe

Julie and John Farrar

Chloe was Carabrae Sauterelle.

She was born 23/7/98

Sire. Gripp de la Bourguine and Carabrae

Dam. Garrigue du Pic d'Arbizon and Carabrae

We have also been informed of the death of Alan and Jackie Fisher's dog Cassie (Nidasha Bright Star) d.o.b 09/02/04 . She was very much part of the family and the loss is great.

It is also of great sadness to hear that Skooter (Riacaud Ulric de Picors) is no longer with us having lost his fight with ill health. Skooter was a great ambassador for the breed in this country and achieved the highest accolades in Working Trials. He also competed in the showing both here and the continent.



This iconic picture of Skooter flying through the air will always remind us of his vitality and uniqueness.

INFORMATION FROM THE KENNEL CLUB BREED RECORDS SUPPLEMENT

*Joint KC/BVA Elbow Dysplasia Scheme
Intrepide du Pic d'Espade Kelltara (Imp Fra) 0*

*Joint KC/BVA Hip Displasia Scheme
Seacourt Esprit De La Foret R 7 L6 Total 13*

*Change of ownership
Sandytrail Ma Cherie d'Amour
From Mr E & Mrs S Flint to Miss S Macdonald*

*Importation:
Joli (Imp Fra) b.17/01/14 c. Fawn br. Mr C
Caussade: Diraty de Loubajac - Galy du
Moulin d'Ebene; owner Ms A Williams*

Don't Cook Your Dog

Never leave a dog unattended in a vehicle, even on a mildly warm day

The British weather can never be guaranteed, but it is important that dog owners keep their pets safe by being aware of the risks of leaving dogs unattended in a car or other vehicle.

Every year the Kennel Club hears reports of dogs literally being cooked alive after being left in vehicles in hot weather, a situation which can so easily be avoided. In common with many animals, dogs are extremely sensitive to heat, and even on a mildly warm day they can quickly overheat - even with the windows open and water available - as temperatures can quickly heat up to around 50 degrees Celsius. Meat can be cooked in ovens in only a little over this temperature as the proteins start to break down.

Dogs can die when left unattended in a vehicle, even when it is in the shade, a window is open and there is water available. The British weather can switch very suddenly so even on cloudy days leaving a dog in a car or other vehicle can prove fatal.

For those travelling with their dogs during the summer months, the Kennel Club has issued the following advice during warm weather.

Always

- Consider the weather and your journey in advance, especially if you don't have air conditioning in your vehicle. Think about whether the journey is absolutely necessary for your dog.
- Make sure your dog has plenty of space and isn't squashed or forced to sit in direct sunlight.
- Always make sure there is shade provided: even in an air conditioned vehicle a dog can become too hot if in full sun.
- Make sure plenty of stops are taken with lots of water available to drink.
- Take cold water in a thermos rather than a plastic bottle so it stays cold rather than being lukewarm. Ice cubes are helpful in a thermos for cooling too.

- Be aware of the signs of overheating in dogs, which include panting, disorientation, excessive thirst, dark gums, vomiting, diarrhoea and losing consciousness.

Never

- Leave a dog unattended in a vehicle, even with the window open and water available. Take them out and leave them in a secure, cool place with access to shade and water or take them with you, there are plenty of places that are part of the Kennel Club's Be Dog Friendly campaign and will allow dogs in. Search for these at www.dogfriendly.co.uk.
- Let your dog take part in unnecessary exertion in hot weather, or stand in exposed sunlight for extended lengths of time.
- Pass by a dog if you see one suffering in a car or other vehicle. Whether it be in a supermarket car park or at a show, make sure you let someone in authority know and if in doubt **call the police on emergency number 999 or the RSPCA on 0300 1234 999**.

What to do if your dog overheats:

- Contact the vet immediately.
- Move the dog out of the heat.
- Offer the dog cool, rather than cold, water for small drinks if the dog is still conscious.
- If possible, fan the dog with cool air.
- Wrap in cool, damp towels or spray with cool, not cold, water. Pay particular attention to the head.
- Cool the dog's tongue by dabbing with a cold, damp cloth.

See more at: <http://www.thekennelclub.org.uk/our-resources/kennel-club-campaigns/dont-cook-your-dog/#sthash.LXQubPRC.dpuf>

IMPORTANT PLEASE NOTE

- *The Kennel Club General Committee has agreed that 'dogs in hot cars' notice for Kennel Club licensed shows and events be changed to make clear that it encompasses all vehicles not just cars.*

SHOWING RESULTS

Working & Pastoral Breeds Association of Wales

18th April 2015
Judge: Mr J Carter

BD NORLYGHT BIASSONO SHCM
(MR C J & MRS P M SUCH)
RBD DUT CH CALOY DE LOUBAJAC (IMPDEU)
(MRS M P WESTON)
BB FRIPONNE DU PIC D'ESPADE KELLTARA
(IMP FRA) (MRS P M PHILLIPS)
RBB INTREPIDE DU PIC D'ESPADE KELLTARA
IMP FRA (MRS P M PHILLIPS)
BOB FRIPONNE DU PIC D'ESPADE KELLTARA
(IMP FRA) (MRS P M PHILLIPS)

Post Graduate - Dog Or Bitch
Entries: 4 Absentees: 1
1st INTREPIDE DU PIC D'ESPADE KELLTARA
IMP FRA (MRS P M PHILLIPS)
2nd NORLYGHT SATU JUTA
(MR C J & MRS P M SUCH)
3rd RAMBAUDS ALLEVARD AUSSI
(MRS M P WESTON)

Open - Dog Or Bitch
Entries: 4 Absentees: 1
1st FRIPONNE DU PIC D'ESPADE KELLTARA
(IMP FRA) (MRS M P PHILLIPS)
2nd NORLYGHT BIASSONO SHCM
(MR C J & MRS P M SUCH)
3rd DUT CH CALOY DE LOUBAJAC (IMPDEU)
(MRS M P WESTON)

National Dog Show 2015

7th, 8th, 9th & 10th MAY, 2015
Judge: Mr Steve Hall

BEST OF BREED : Gastibelza de l'Oustaou
de Padel (Imp) Mrs S & Mr E FLINT
Best Dog : Gastibelza De L'oustaou De Padel
(Imp) Mrs S & Mr E FLINT
Res Best Dog : Norlyght Biassono
Mr C J & Mrs P M SUCH
Best Bitch : Sandytrail Ensorcele
Mrs S & Mr E FLINT
Res Best Bitch : Kimrand Pixie Belle
Mr F J RANDALL & Miss K RANDALL

Class JD/B (2 Entries) Abs: 0
1st: Kimrand Pixie Belle
Mr F J RANDALL & Miss K RANDALL
2nd: Sandytrail Soupcon Ms C GROVES

Class OD (3 Entries) Abs: 0
1st: Gastibelza De L'oustaou De Padel (Imp)
Mrs S & Mr E FLINT
2nd: Norlyght Biassono
Mr C J & Mrs P M SUCH
3rd: Gazost 11 Dit Oscar du Pic d'Espade
Kelltara (Imp) Mrs P PHILLIPS

Class OB (4 Entries) Abs: 0
1st: Sandytrail Ensorcele
Mrs S & Mr E FLINT
2nd: Friponne Du Pic D'espade Kelltara
(Imp) Mrs P PHILLIPS
3rd: Intrepide Du Pic D'espade Kelltara
(Imp) Mrs P PHILLIPS
Res: Norlyght Satu Juta
Mr C J & Mrs P M SUCH

Bath Canine Society 2015

22nd, 23rd, 24th & 25th MAY, 2015

Judge: Mrs Vicky Wilford

BEST OF BREED : Bel Jun Ch Sandytrail
Ensorcele Mrs S & Mr E FLINT
Best Dog : Bel Ch Gastibelza De L'oustaou
De Padel (Imp) Mrs S & Mr E FLINT
Res Best Dog : Norlyght Biassono
Mr C J & Mrs P M SUCH
Best Bitch : Bel Jun Ch Sandytrail Ensorcele
Mrs S & Mr E FLINT
Res Best Bitch : Sandytrail Solitaire avec
Ciopar Ms P BUCHANAN-HISLOP

Class LD (1 Entries) Abs: 0
1st: Norlyght Biassono
Mr C J & Mrs P M SUCH

Class OD (2 Entries) Abs: 1
1st: Bel Ch Gastibelza De L'oustaou De Padel
(Imp) Mrs S & Mr E FLINT

Class JB (2 Entries) Abs: 0
1st: Ms P Sandytrail Solitaire avec Ciopar
Ms P BUCHANAN-HISLOP

2nd: Kimrand Pixie Belle
Mr F J RANDALL & Miss K RANDALL

Class LB (3 Entries) Abs: 2

1st: Norlyght Satu Juta
Mr C J & Mrs P M SUCH

Class OB (2 Entries) Abs: 1

1st: Bel Jun Ch Sandytrail Ensorcele
Mrs S & Mr E FLINT

**Southern Counties Canine
Association**

29th-31st June
AVNSC

Judge(s): HARRI LEHKONEN

RBD NORLYGHT BIASSONO (MR C J & MRS
P M SUCH)

Open - Dog

Entries: 2 Absentees: 0

2nd NORLYGHT BIASSONO
(MR C J & MRS P M SUCH)

Veteran - Dog Or Bitch

Entries: 2 Absentees: 1

1st IR CH MERRYWOOD ELEKTRA AT
NORLYGHT (MR C J & MRS P M SUCH)

**Three Counties Championship
Show 2015**

4th, 5th, 6th & 7th JUNE, 2015

Judge: Mr R C Kinsey

BEST OF BREED : Friponne du Pic d'Espade
Kelltara (Imp) Mrs P PHILLIPS

Best Dog : Gazost 11 Dit Oscar du Pic
d'Espade Kelltara (Imp) Mrs P PHILLIPS

Res Best Dog : Norlyght Biassono
Mr C J & Mrs P M SUCH

Best Bitch : Friponne du Pic d'Espade
Kelltara (Imp) Mrs P PHILLIPS

Res Best Bitch : Kimrand Pixie Belle
Mr F J RANDALL & Miss K RANDALL

Class 568 OD (2 Entries) Abs: 0

1st: Gazost 11 Dit Oscar du Pic d'Espade
Kelltara (Imp) Mrs P PHILLIPS

2nd: Norlyght Biassono
Mr C J & Mrs P M SUCH

Class JB (2 Entries) Abs: 1

1st: Kimrand Pixie Belle
Mr F J RANDALL & Miss K RANDALL

Class PGB (2 Entries) Abs: 0

1st: Norlyght Satu Juta

Mr C J & Mrs P M SUCH

2nd: PHILLIPS Mrs P Intrepide Du Pic
D'espade Kelltara (Imp)

Class OB (1 Entries) Abs: 0

1st: Friponne Du Pic D'espade Kelltara (Imp)
Mrs P PHILLIPS

**Border Union Agricultural
Society**

20th-21st June

Pastoral Group Judge(s):

MR JEFF LUSCOTT (JALUS)

Puppy - Dog

Entries: 3 Absentees: 0

2nd IVYDALE ILMATAR (MRS A CARTER)

**Blackpool & District Canine
Society**

26th-28th June

BEST OF BREED: Sandytrail Ensorcele
Mr E & Mrs S Flint

Best Dog: Gazost II Dit Oscar du Pic
d'Espade Kelltara (Imp Fra)

Mrs P M Phillips

Best Bitch: Sandytrail Ensorcele
Mr E & Mrs S Flint)

Res Best Bitch: Friponne du Pic d'Espade
Kelltara (Imp Fra) Mrs P M Phillips

Open-Dog

Entries: 3 Absentees: 2

1st: Gazost II Dit Oscar du Pic D'Espade
Kelltara (Imp Fra) Mrs P M Phillips

Junior-Bitch

Entries: 2 Absentees: 1

1st: Sandytrail Solitaire avec Ciopar
Ms P Buchanan-Hislop

Postgraduate-Bitch

Entries:3 Absentees:1

1st: Intrepide du Pic d'Espade Kelltara
(Imp Fra) Mrs P M Phillips)
2nd: Pippanabbey Remember Me
K Bellamy

Open-Bitch

Entries:2 Absentees:0

1st: Sandytrail Ensorcele
Mr E & Mrs S Flint
2nd Friponne du Pic d'Espade (Imp Fra)
Mrs P M Phillips

Windsor Championship Dog Show 2015

2nd, 3rd, 4th & 5th, JULY, 2015

Judge: Mr S J Mallard

BEST OF BREED : Friponne du Pic d'Espade
Kelltara (Imp) Mrs P PHILLIPS
Best Dog : Seacourt Esprit Du Troupeau
Mr S R PHILLIPS
Res Best Dog : Norlyght Biassono
Mr C J & Mrs P M SUCH
Best Bitch : Friponne du Pic d'Espade
Kelltara (Imp) Mrs P PHILLIPS
Res Best Bitch : Norlyght Satu Juta
Mr C J & Mrs P M SUCH

Class OD (2 Entries) Abs: 0

1st: Seacourt Esprit Du Troupeau
Mr S R PHILLIPS
2nd: Norlyght Biassono
Mr C J & Mrs P M SUCH

Class PGB (2 Entries) Abs: 1

1st: Norlyght Satu Juta
Mr C J & Mrs P M SUCH

Class OB (1 Entries) Abs: 0

1st: Friponne du Pic d'Espade Kelltara (Imp)
Mrs P PHILLIPS

East of England Agricultural Society

10th-12th July

Pastoral Group Judge(s): MR J LUSCOTT

BD BEL CH GASTIBELZA DE L'OUSTAOU DE
PADEL (IMP FRA) (MR E & MRS S FLINT) RBD

SEACOURT ESPRIT DU TROUPEAU (MR S R
PHILLIPS)

BB FRIPONNE DU PIC D'ESPADE KELLTARA
(IMP FRA) (MRS P M PHILLIPS) RBB
SANDYTRAIL ENSORCELE BEL JUN CH (MR E
& MRS S FLINT)
BOB FRIPONNE DU PIC ESPADE

Open - Dog

Entries: 2 Absentees: 0

1st BEL CH GASTIBELZA DE L'OUSTAOU DE
PADEL (IMP FRA) (MR E & MRS S FLINT)
2nd SEACOURT ESPRIT DU TROUPEAU
(MR S R PHILLIPS)

Post Graduate - Bitch

Entries: 4 Absentees: 1

1st INTREPIDE DU PIC D'ESPADE KELLTARA
(IMP FRA) (MRS P M PHILLIPS)
2nd KIMRAND PIXIE BELLE
(MR F J & MISS K RANDALL)
3rd REMMIWOODS MORNING MYRTLE
(MRS S M TAYLOR)

Open - Bitch

Entries: 3 Absentees: 1

1st FRIPONNE DU PIC D'ESPADE KELLTARA
(IMP FRA) (MRS P M PHILLIPS)
2nd SANDYTRAIL ENSORCELE BEL JUN CH
(MR E & MRS S FLINT)

National Working & Pastoral Breeds Society 2015

Saturday, 11th JULY 2015

Judge: Mr R Newhouse

BEST OF BREED : Friponne du Pic d'Espade
Kelltara (Imp) Mrs P PHILLIPS
Best Dog : Gazost 11 Dit Oscar du Pic
d'Espade Kelltara (Imp) Mrs P PHILLIPS
Best Bitch : Friponne du Pic d'Espade
Kelltara (Imp) Mrs P PHILLIPS
Res Best Bitch : Merrywood Dancing Queen
At Kelltara Mrs P PHILLIPS

Class OD (1 Entries) Abs: 0

1st: Gazost 11 Dit Oscar du Pic d'Espade
Kelltara (Imp) Mrs P PHILLIPS

Class VD/B (1 Entries) Abs: 0

1st: Merrywood Dancing Queen At Kelltara
Mrs P PHILLIPS

Class PGB (2 Entries) Abs: 1

1st: Kimrand Pixie Belle
Mr F J RANDALL & Miss K RANDALL

Class OB (2 Entries) Abs: 0

1st: Friponne du Pic d'Espade Kelltara (Imp)
Mrs P PHILLIPS
2nd: Ivydale Cerise With Kimrand
Mr F J RANDALL & Miss K RANDALL

**Judging for Best in Pastoral Group
Judge: Mr J Luscott**

3rd : Friponne du Pic d'Espade Kelltara
(Imp) Mrs P PHILLIPS
PYRENEAN SHEEPDOG (Long Haired)
Bitch

Also achieved BEST RARE BREED IN SHOW

**Leeds Championship Dog Show
2015**

24th, 25th & 26th JULY, 2015

Judge: Mrs S Garner

BEST OF BREED : Seacourt Esprit Du
Troupeau Mr S R PHILLIPS

Best Dog : Seacourt Esprit Du Troupeau
Mr S R PHILLIPS

Res Best Dog : Bel Ch Gastibelza De
l'Oustaou de Padel (Imp)
Mrs S & Mr E FLINT

Best Bitch : Bel Jun Ch Sandytrail Ensorcele
Mrs S & Mr E FLINT

Res Best Bitch : Kimrand Pixie Belle
Mr F J RANDALL & Miss K RANDALL

Best Veteran : Ivydale Nightjar Meslabrit
Sh.CM,
Mrs R E ROBSON & Miss K L ROBSON

Class PGD (1 Entries) Abs: 0

1st: Seacourt Esprit du Troupeau
Mr S R PHILLIPS

Class OD (3 Entries) Abs: 1

1st: Bel Ch Gastibelza de L'Oustaou de Padel
(Imp) Mrs S & Mr E FLINT

2nd: Ivydale Choirboy Meslabrit Sh.CM
Mrs R E ROBSON & Miss K L ROBSON

Class PGB (2 Entries) Abs: 0

1st: Kimrand Pixie Belle
Mr F J RANDALL & Miss K RANDALL
2nd: Intrepide du Pic d'Espade Kelltara
(Imp) Mrs P PHILLIPS

Class OB (2 Entries) Abs: 0

1st: Bel Jun Ch Sandytrail Ensorcele
Mrs S & Mr E FLINT
2nd: Friponne du Pic d'Espade Kelltara
(Imp) Mrs P PHILLIPS

Class VB (1 Entries) Abs: 0

1st: Ivydale Nightjar Meslabrit Sh.CM,
Mrs R E ROBSON & Miss K L ROBSON

**Paignton & District Fanciers
Association 2015**

Sat 1st, Sun 2nd, Mon 3rd & Tue 4th
AUGUST, 2015

Judge: Mr M Armstrong

BEST OF BREED : Friponne du Pic d'Espade
Kelltara (Imp) Mrs P PHILLIPS

Best Dog : Seacourt Esprit du Troupeau
Mr S R PHILLIPS

Best Bitch : Friponne du Pic d'Espade
Kelltara (Imp) Mrs P PHILLIPS

Res Best Bitch : Bel Jun Ch Sandytrail
Ensorcele Mrs S & Mr E FLINT

Class PGD/B (1 Entries) Abs: 0

1st: Seacourt Esprit Du Troupeau
Mr S R PHILLIPS

Class OD/B (3 Entries) Abs: 1

1st: Friponne du Pic d'Espade Kelltara (Imp)
Mrs P PHILLIPS

2nd: Bel Jun Ch Sandytrail Ensorcele
Mrs S & Mr E FLINT



JUDGES REPORT

Bath Canine Society Championship Show
24th May 2015

Pyrenean Sheepdog [Long Haired]
Judge.... Mrs. V Wilford

Thank you to the Bath Canine Society for inviting me to Judge. The weather was kind for our group day and combined with the show committee's excellent organisation and the good nature and professionalism of every one I met, it made for an very enjoyable day. To the exhibitors- it was a privilege and an honour to judge you, Thank You.

BEST of BREED :- Bel Jun Ch Sandytrail Ensorcele - Mr E & Mrs S Flint
RES BEST OF BREED :- Bel Ch. Gaztibelza De L'Oustaou De Padel (Imp) - Mr E & Mrs S Flint
BEST DOG :- Bel Ch. Gaztibelza De L'Oustaou De Padel (Imp) - Mr E & Mrs S Flint
RESERVE BEST DOG :- Norlyght Biassono – Mr C & Mrs P Such
BEST BITCH :- Bel Jun Ch Sandytrail Ensorcele - Mr E & Mrs S Flint
RESERVE BEST BITCH :- Sandytrail Solitaire avec Ciopar - Mrs P Buchanan-Hislop

Limit Dog

1st & RBD Norlyght Biassono – Mr C & Mrs P Such
4 yrs old, Very Good head proportions, Excellent deep colour and shape of eye, Exc deeper fawn colour of Coat and Good Texture, Well coupled with Good angulation, Good outline, Excellent Balance and Reach & Drive at speed.

Open Dog [2 entries – 1 absent]

1st & BD - RBOB Bel Ch. Gaztibelza De L'Oustaou De Padel (Imp) - Mr E & Mrs S Flint
3yrs old, Very Good head, Excellent dark eye colour & shape, Exc Ears set well on head, Exc. Angulation of fore & hind limbs and coupling, Exc. proportions
Excellent coat colour and texture, well shown

in Cadenets

Junior Bitch

1st & RB Sandytrail Solitaire avec Ciopar - Mrs P Buchanan-Hislop
Just over 1yr old, Good sized, Very Good overall picture Very Good head with Excellent eyes & ears. Good reach of neck, Exc. Proportions, good length of leg with Very good angulation.
Excellent tail with hook

2nd Kimrand Pixie Belle – Mr F & Miss K Randall

16 months old, Another very nice young female with Excellent head proportions. Exc. eyes, Exc. ear set with Exc. triangular shape ears. Excellent Expression, Very Good construction with Exc. hind quarters. Excellent fawn colour of coat

Limit Bitch [3 entries – 2 absent]

1st Norlyght Sata Juta – Mr C & Mrs. P Such
2yrs 2months.. Very Good head with an Excellent Expression. Excellent eye shape and colour, well set ears. Very good overall construction, Good colour of coat. Exc.hind limbs with lovely low hocks. Exc. Oval shaped feet. Exc. Tail with hook. Very nice young female.

Open Bitch [2 entries – 1 absent]

1st – BB & BOB Sandytrail Ensorcele - Mr E & Mrs S Flint
2yrs 3months.. Very mature young female with Excellent overall proportions
Excellent head and expression, Exc. eyes and ears
Good coat colour and texture excellently presented in cadenets





FUN DAY



2015



PSD Club of GB
Agility Day

Saturday 12th September 2015
Bench Barn Farm, Stoke Road, Clare,
Sudbury, Suffolk. CO10 8HQ

Start time 10.15am Finish 4.00pm

Come and have a go at Agility with an experienced trainer.
Classes for all levels of ability from beginners to those competing.

Trainer:- Helen Anderson



Bring your own lunch. Cost £25 to cover trainer's fee.

Check the web site for details and downloadable application form.

Pyrenean Sheepdog Beach Walk Hunstanton, Norfolk.

Old Hunstanton Beach, Cliff Car Park, PE36 6EL



*11.30 Start - Walk to headland and back
returning about 1pm - 1.30pm.*

Open to any club members and non club members who own
PSDs or have any interest in finding out about the breed.

**HUNSTANTON
SUNDAY**

1st November

2015

Before you go home
The Lighthouse Cafe
in the car park is open
for teas and coffees
and light snacks.

All well behaved dogs
are very welcome.

If you have any questions
please contact
Jonathen Pattison
email address on
PSD Club website
www.pyreneansheepdog.co.uk